

## PPT Release Notes

### 3.2 build 3

1. **Upgrade:** Third-party controls have been upgraded to the latest version.

### 3.2 build 2

1. **Issue:** In certain situations, PPT may have a problem with the database connection when the Provider setting is set to “Direct” in the file “Vemax.GlobeInfo.dat”.  
**Status:** This issue has been resolved.

### 3.2 build 1

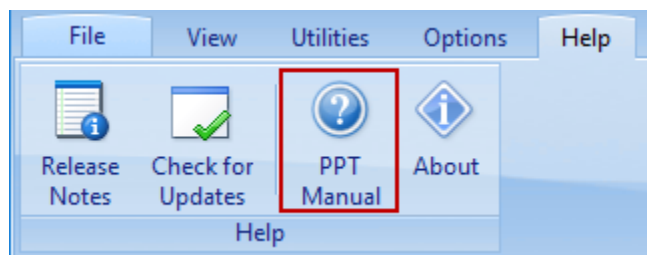
1. **Upgrade:** Third-party controls have been upgraded to the latest version.

### 3.2 build 0

1. **Upgrade:** All third-party controls have been upgraded to the latest version.
2. **Enhancement:** Improved performance for the Strategic Prediction Model screen.

### 3.1 build 0

1. **Major Upgrade:** To improve compatibility with Windows 10 and SQL Server 2016, we have upgraded our development tools and third-party controls (such as the grids, edit controls, buttons, etc.) to the latest version.
2. **New Feature:** Added the button “PPT Manual” to the “Help” tab on the ribbon.



3. **Issue:** An error “Connection is not defined” occurs when the Apply Setup button is pressed for the new model setup.  
**Status:** This issue has been resolved.
4. **Issue:** The report “Treatment Distress Per Year” does not show all the values for some results.  
**Status:** This issue has been resolved.
5. **Issue:** In the “Strategic Run Setup” screen, the column “Must Equal Good” on the “Annual Targets” tab is not included to the Solver when executing the run with the check box “Select Multiple Targets” checked on the “Run” tab.  
**Status:** This issue has been resolved.

### 3.0 build 2

1. **Enhancement:** Numerous enhancements to the scripting engine.
2. **Modification:** Disabled the Copy button in the Run Setup in Strategic and Tactical when there is no Run Setup to avoid confusion.

### 3.0 build 1

1. **Enhancement:** Improved the Import/Export Model Setup process.

### 3.0 build 0

1. **Major Upgrade:** All third-party controls have been upgraded to the latest version.
2. **Enhancement:** PPT now supports displaying text with the Windows text size setting greater than 100%.
3. **Enhancement:** Added more Custom Fields 9 to 20 to the Model Setup screen.
4. **Enhancement:** Enhanced the Copy Setup button on the Model Setup screen to copy Strategic Targets data.
5. **New Feature:** Added the ability in the Model Setup to turn on or off the filter by the Fiscal Year and/or Region when loading the condition data. This means that individual SQL Views for each region and fiscal year are no longer required if these fields are filled in.

The screenshot shows the 'Network' model setup interface. It features a list of fields with dropdown menus for selection. The fields are:

- Field with Area Data: Area (m2)
- Field with Segment ID: Lane Segment
- Field with From: From KM
- Field with To: To KM
- Field with Length: Representative Length (km)
- Field with Road Name: Road Name
- Field with Road Type: Pavement Type
- Field with Road Classification: LOS
- Field with Survey Date: Auto Rating Date
- Field with Fiscal Year: Model Year
- Field with Region: Region

Below these fields, there are two columns: 'Custom Field Caption' and 'Custom Field'. The 'Custom Field' column has a 'Filter' checkbox next to it, which is checked and highlighted with a red box. The 'Custom Field' column also has a dropdown menu for each field.

	Custom Field Caption	Custom Field
1:	Max Rut	Max Rut
2:	Max IRI	Max IRI
3:	IRI GP	IRI Good Poor

6. **New Feature:** Added a button to the quick access toolbar for hiding all navigation to maximize the main Form. Note: this button is disabled if a form is not loaded such as when the application is loaded. Once a form is loaded, this button is enabled automatically.



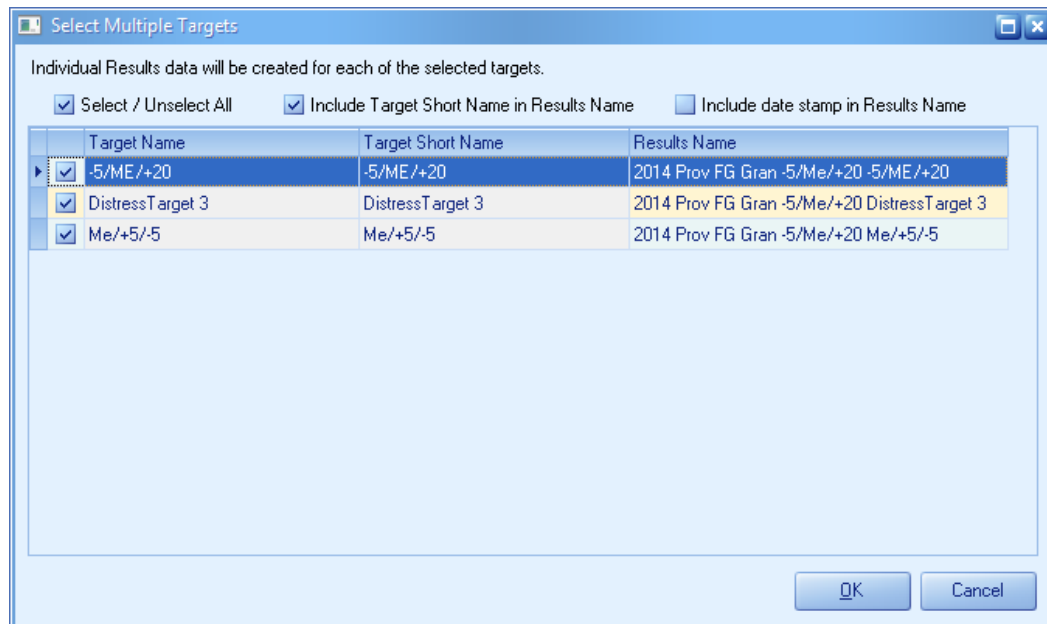
7. **New Feature:** Added Edit and Save buttons in the Strategic and Tactical Results screens so the Results Name and Description can be edited after the results are created. Under normal operation, these edit boxes are read-only until the Edit button is pressed. Pressing the Save button puts these boxes back to read-only mode.

The screenshot displays a software interface for managing results. At the top, there are two text input fields: 'Results Name' containing '2015 Status Quo (Oct 28, 2015 16:42:18)' and 'Description'. To the right, there are two date fields: 'Date Created' (2015-10-28 4:42 PM) and 'Date Last Modified' (2016-04-15 11:43 AM). Below these fields is a row of action buttons: 'DataViewer', 'Reports', 'Delete', 'Restore', 'Edit', and 'Save'. The 'Edit' and 'Save' buttons are highlighted with a red box, and a red arrow points from the 'Edit' button to the 'Results Name' field. Below the buttons is a navigation bar with tabs: 'Summary', 'Setup Details', 'Distress Weight', 'Budget', 'Pred Model', and 'Run'. At the bottom, there is a 'Treatment Program' section with a 'View' button and several icons for document, navigation, and data management.

8. **New Feature:** Added Copy button to the Strategic Run Setup and Tactical Run Setup screens for making a copy of the selected Run Setup.
9. **Enhancement:** The Strategic Cost Models and Strategic Prediction Models are now recreated automatically if the Distress and/or Treatment data has been changed in the Model Setup.
10. **Modification:** The Copy Setup button on the Model Setup screen now sets the Date Created and Date Last Modified dates for the copied data to the current date.
11. **Issue:** An error occurs when clicking back and forth on the Strategic Prediction Model nodes in the navigator.  
**Status:** This issue is resolved.

## 2.0 build 4

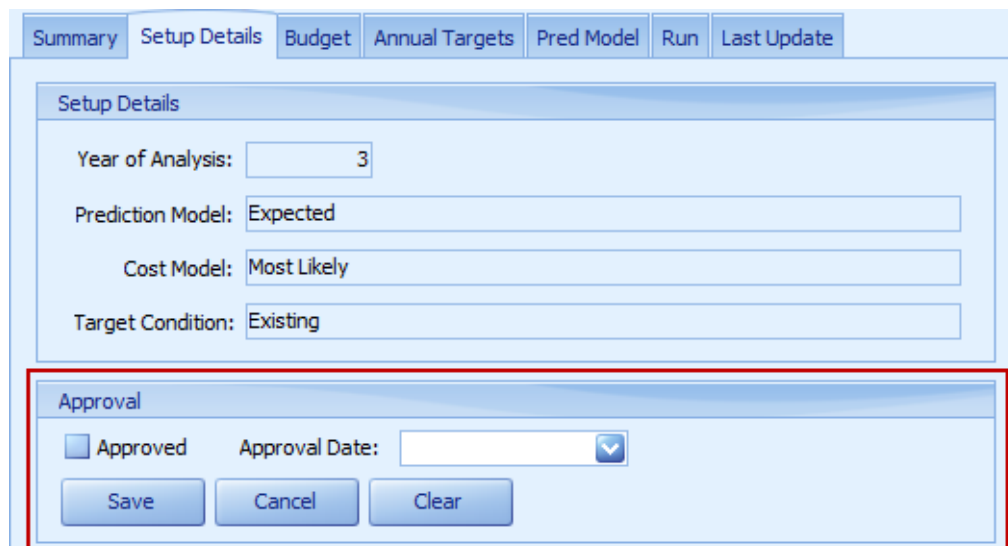
1. **Major New Feature:** Added the checkbox “Select Multiple Targets” to the Run tab on the Strategic Run Setup screen. When this checkbox is checked and the Run Analysis button is pressed, it will show the “Select Multiple Targets” dialog for creating a batch of Results data for each target.



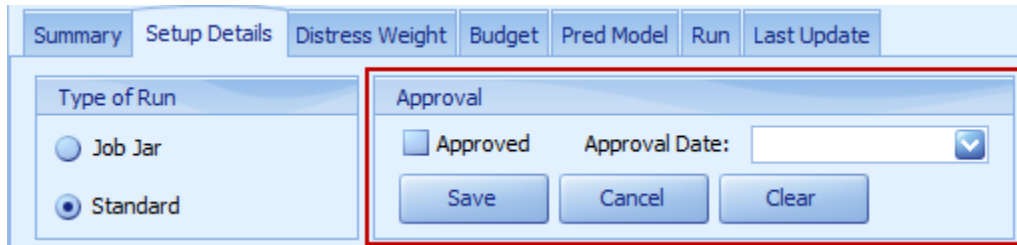
2. **Upgrade:** The third-party controls have been upgraded to the latest version.

## 2.0 build 3

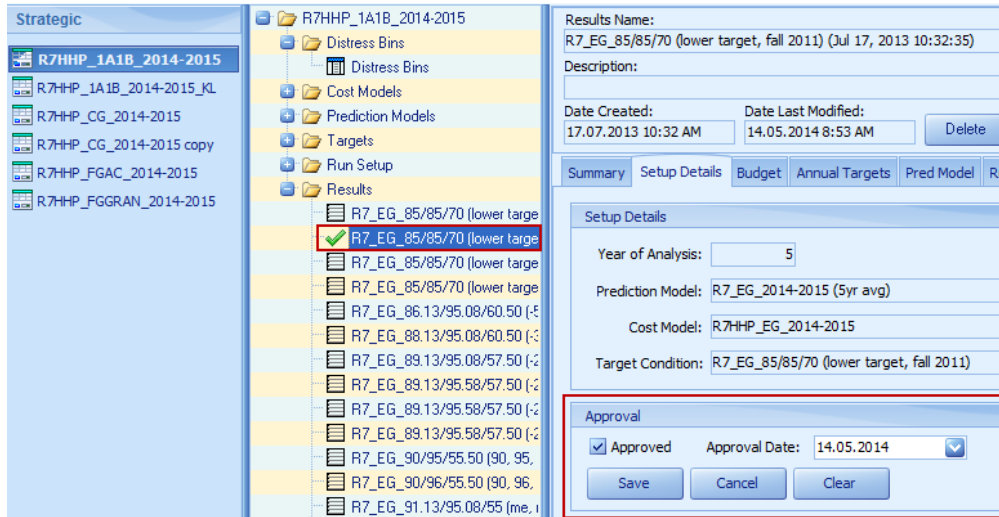
1. **New Feature:** Added the Approval controls to the Setup Details tab in the Strategic Results screen for approving the selected result.



2. **New Feature:** Added the Approval controls to the Setup Details tab in the Tactical Results screen for approving the selected result.



3. **New Feature:** Enhanced the navigator to show a check mark for the approved record.



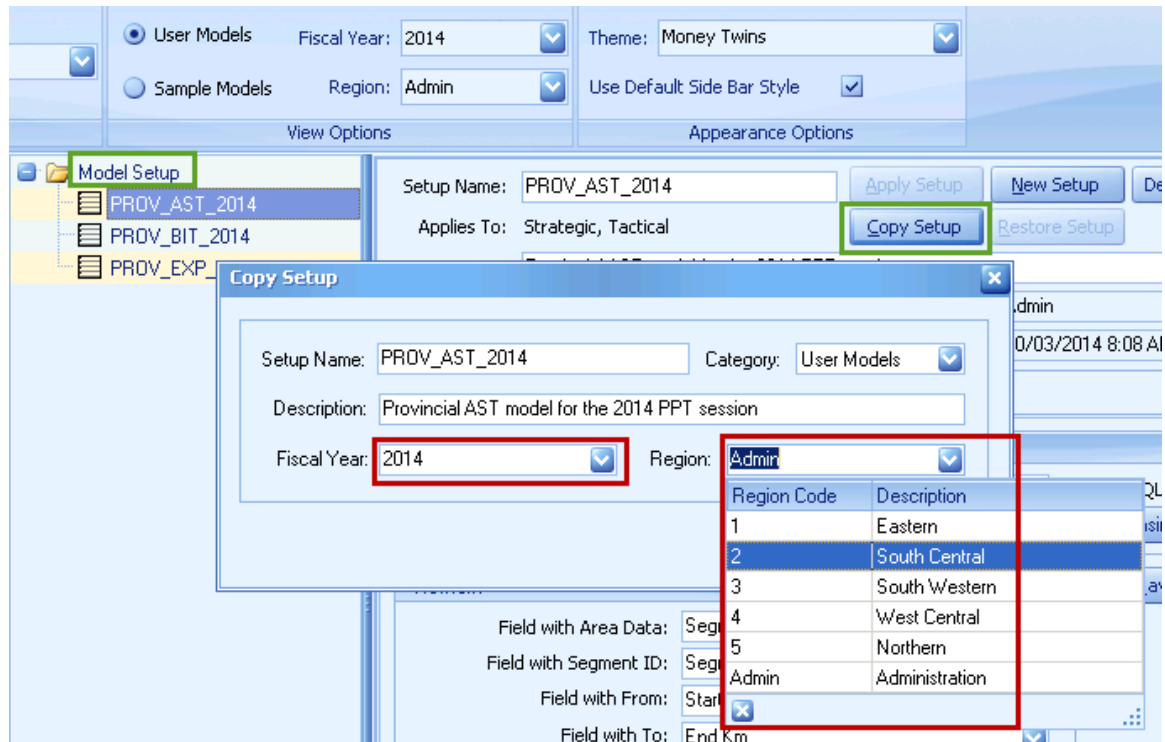
## 2.0 build 2

1. **Upgrade:** The third-party controls have been upgraded to the latest version.

## 2.0 build 1

1. **Upgrade:** The third-party controls have been upgraded to the latest version.

2. **Enhancement:** The Copy Setup dialog from the Model Setup screen now allows selecting the Fiscal Year and Region so that the user can copy a model from one Fiscal Year and/or Region to another. The Region pick-list is filtered by the regions that user has edit rights to.



#### 2.0 build 0

1. **Major Release:** PPT has been re-designed and upgraded using the latest Asset Register.

#### 1.0 build 11

1. **Upgrade:** Upgraded to the latest database connection components, which corrects many internal defects regarding data access.
2. **Enhancement:** PPT now supports encrypted password for the user login.
3. **Modification:** Changed the Tactical Run Setup screen to skip the solver when doing the run if the budget limit is zero.

#### 1.0 build 10

1. **Modification:** Renamed the side bar group names "Strategic Models" to "Strategic" and "Tactical Models" to "Tactical".
2. **Enhancement:** Improved performance on generating the results for the Strategic and Tactical Run Setups.
3. **Issue:** An error occurs when loading the Strategic or Tactical Results screen.  
**Status:** This issue is resolved.

#### 1.0 build 9

1. **New Feature:** Added Patch Data menu item to the Utilities menu in PPT that opens the Patch Data dialog. The Patch Data dialog allows the user to apply the patch data file provided by Vemax for patching the data.

#### 1.0 build 8

1. **Enhancement:** Improved performance on loading the navigator.
2. **Enhancement:** Improved performance on deleting the Model Setup.
3. **Enhancement:** Added hints to the buttons on the Model Setup screen.
4. **Issue:** The Database and Table Name edit boxes on the Load Data tab are disabled instead of setting as read only.  
**Status:** This issue is resolved.

#### 1.0 build 7

1. **Enhancement:** PPT now supports Windows Server 2008.

#### 1.0 build 6

1. **Upgrade:** Upgraded to the latest database connection components (v4.50), which corrects many internal defects regarding data access.
2. **Issue:** The Strategy Run Setup does not generate correct “Results by Condition State” data with the Discount Rate applied. The “Treatment Distress Per Year” report also shows incorrect values because it reads from the same data.  
**Status:** This issue is resolved.

#### 1.0 build 5

1. **Upgrade:** The PPT reports and PPT utilities have been upgraded to support version 2 of the Microsoft .NET Framework.  
The [iBOSToolsPrerequisites\\_2\\_0.exe](#) install is needed for this version of PPT.
2. **Modification:** Changed to store the grid settings to the system database instead of the local files.
3. **Modification:** Changed to store the grid settings as user/screen specific instead of user/model specific.

#### 1.0 build 4

1. **New Feature:** Added “Field with Road Type” and “Field with Road Classification” pick lists to the Model Setup screen.
2. **Enhancement:** Added better support for Microsoft SQL Server 2005.
3. **Enhancement:** Improved performance for the Archive Setup and Restore Setup processes.
4. **Enhancement:** The Treatment Name, Distress Name, and Field Name for field mapping are now supported up to 50 characters.
5. **Enhancement:** The Cost Model Name, Prediction Model Name, and Targets Name are

now supported up to 100 characters.

6. **Enhancement:** The Segment Name is now supported up to 255 characters.
7. **Issue:** The sidebar items are not being refreshed when the F5 key is pressed.  
**Status:** This issue is resolved.

#### 1.0 build 3

1. **Modification:** Moved the Condition Table/View pick list to one row below the Database Name pick list and changed the width to be wider in the Model Setup screen.
2. **Issue:** An error occurs when loading the navigator records with the user filter created from AR Enterprise. PPT should not include the user filter from AR Enterprise.  
**Status:** This issue is resolved.

#### 1.0 build 2

1. **Issue:** Treatment Distress by Year report does not show the Target Condition for "Good" correctly.  
**Status:** This issue is resolved.
2. **New Feature:** Added "Model Edit Rights Selection" feature on "Utilities" menu. This feature allows the user to select certain users to have edit rights to certain models.

#### 1.0 build 1

1. **Issue:** For the strategic model, the "Load Data" tab on the "Distress Bins" screen is not showing the correct data for the selected model.  
**Status:** This issue is resolved.
2. **Issue:** The navigator is not showing any nodes for both strategic and tactical models. This issue occurs when the user switches between two different PPT databases.  
**Status:** This issue is resolved.
3. **Issue:** There is a memory leak Issue with the "TMSTable" components not being destroyed when the user navigating to a different form.  
**Status:** This issue is resolved.
4. **Issue:** For the strategic model, when the "Multiplier" button is pressed on the "Prediction Models" screen, it does not show the "Multiplier" dialog with the correct size and position on some of the computers.  
**Status:** This issue is resolved.
5. **Issue:** For the strategic model, the "Multiplier" dialog from the "Prediction Models" screen shows the "Field Good not found" error when the Model Setup has only one distress record.  
**Status:** This issue is resolved.
6. **Issue:** For the model setup, the "Distresses" and "Treatment Name" grids should not allow to have blank or duplicate name value.  
**Status:** This issue is resolved.



7. **Issue:** The error “The statement has been terminated. String or binary data.” occurs when the user presses the “Load Data” button to load the condition data containing fields with more than 8 decimals.

**Status:** This issue is resolved.

#### 1.0 build 0

1. Released first version of PPT (SQL Server version) to the users.

#### v0.0 build 5 (Beta)

1. **New Features:**

- ☒ The navigator for Strategic Models and Tactical Models is now split into two parts. The top part contains the model setup nodes and the bottom part contains the strategic or tactical model nodes for the selected model.
- ☒ Added Run Manager dialog to replace the Condition Data is out of date message for Strategic Models. The Run Manager keeps track of changes made to the model setup and assist in updating the appropriate information before the run takes place.
- ☒ Added “Use the aged data table in this Model Setup” check box to Age Network tab on PPT Cond Data utility. It allows the user to use the newly created aged data table for the model setup.

#### v0.0 build 4 (Beta)

1. **Upgrade:** Upgraded to the latest database connection components.

#### v0.0 build 3 (Beta)

1. Import Export Model Setup, Import Export Prediction Model, PPT Cond Data, and MiPP MaPP utilities are now fully implemented.
2. Added “Remove Record Locks” feature on “Utilities” menu. This feature is disabled by default. If it is enabled, it allows the user to remove the bad record locks created by computer crash.
3. Added “Check For Updates” feature on “Help” menu. This feature is for checking for new updates for the PPT application. PPT checks for updates on startup, if the “Disable Auto Update” flag is set to “No”.
4. On startup of PPT, it will check for multi instances of PPT application if the “Allow Multi Instances” flag is set to “No”.

#### v0.0 build 2 (Beta)

1. Added table locking functionality for Model Setup. It locks the table when doing Apply Setup, New Setup, Delete Setup, Copy Setup, Restore Setup, or Archive Setup.

## v0.0 build 1 (Beta)

1. This is a beta version with limited functionalities. All the utilities on Utilities menu are not yet implemented.

### 2. **New Features:**

- ☒ Archive Setup on Model Setup screen for active Model Setup. It makes an exact copy of the selected Model Setup and places it on “Archive” sidebar item. All screens for archived Model Setup are read only.
- ☒ Restore Setup on Model Setup screen for archived Model Setup. It restores the archived Model Setup as active Model Setup to existing or new sidebar item.
- ☒ Restore Results on Results screen for Strategic Model. It restores the Results data (Prediction Model and Cost Model) to existing Strategic Run Setup.
- ☒ Restore Results for on Results screen for Tactical Model. It restores the Results data (Prediction Model and Distress Weight) to existing Tactical Run Setup.