

## Release Notes for MMS

### 3.3 build 1

1. **Modification:** Changed the Active check box in the Resource Group screen to be enabled only when the user has System Config access.

### 3.3 build 0

1. **Modification:** In preparation of the next major release of MMS (version 4), we changed the internal settings and default installation folder to support concurrent installations of MMS version 3 and MMS version 4.
2. **Enhancement:** Added the Active check box to the Resource Group screen. Resource Groups with the Active check box unchecked will be excluded from the Resource Group pick list.
3. **Enhancement:** Improved the tab order on all forms when the Apply button is pressed.

### 3.2 build 69

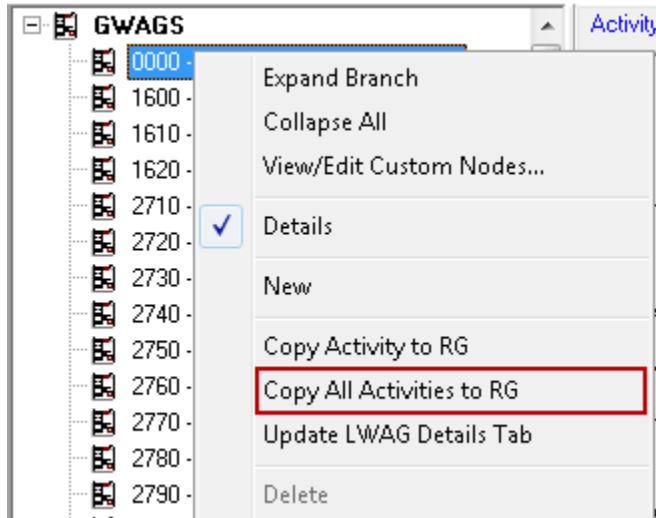
1. **Enhancement:** When creating a new LWAG with missing resources in the local list, a confirmation message is displayed to ask the user if he or she wants to continue to create the LWAG instead of stopping the process as in the previous version of MMS. This enables the user to create the LWAG applicable to the resource group without the need to create non-applicable local resources.

### 3.2 build 68

1. **Modification:** Changed Custom DWR to use the user settings for the application name "Custom DWR" in Custom Control Panel if they exist. If the Custom DWR settings do not exist, it will use the user settings for the application name "Maintenance Management System" (as the previous version did). All MMS users will continue to have access to Custom DWR as they did before this version.
2. **Modification:** Changed Custom DWR to check for the application license information using the application name "Custom DWR" instead of "Maintenance Management System". Custom DWR has a separate application license from now on.

### 3.2 build 67

1. **New Feature:** Added new popup menu item "Copy All Activities to RG" to the GWAG screen for copying all activities to the current resource group. This popup menu item is enabled when the setting "Enable Copy All Activities to RG in GWAG" is set to Yes.



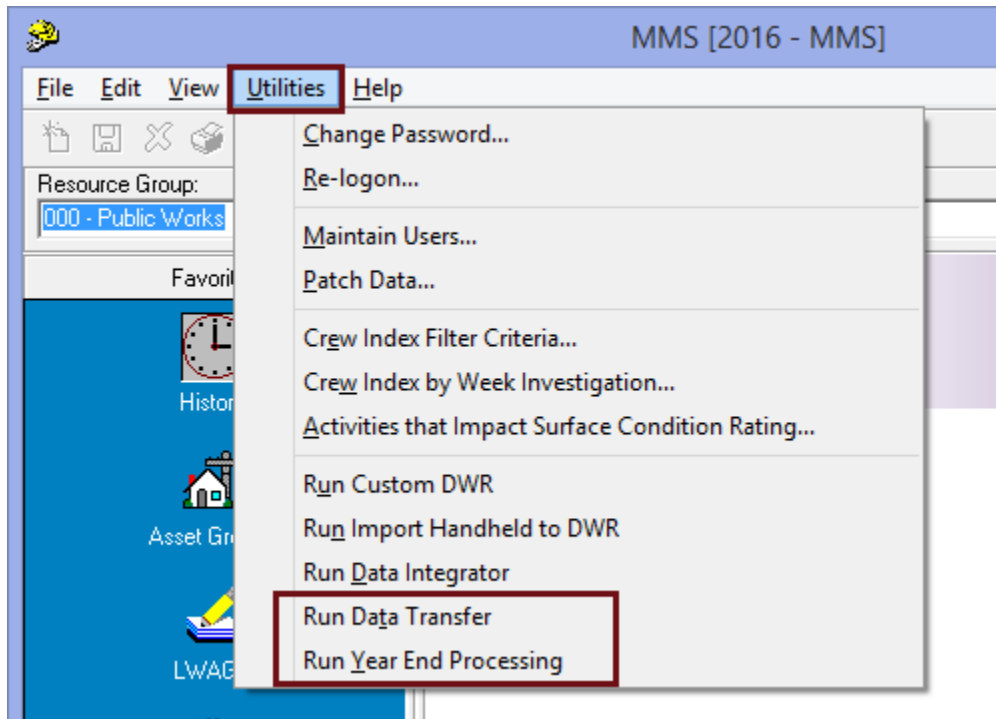
2. **Issue:** The Activity grid in the Asset Group screen is showing duplicated activities. This is just a display problem. The data is not duplicated in the database.  
**Status:** This issue has been resolved.

### 3.2 build 66

1. **Modification:** Changed the way that MMS is checking for the application license information.

### 3.2 build 65

1. **Enhancement:** Redesigned the About box for Custom DWR to provide the same detailed information that is in the MMS About box.
2. **Enhancement:** Made some cosmetic improvements to Data Integrator.
3. **Enhancement:** Made some cosmetic improvements to MMS Data Transfer.
4. **Enhancement:** Added new menu item "Utilities\Run Data Transfer" to MMS for running Data Transfer from MMS. This menu item is enabled when the setting "User Can Run Data Transfer" is set to Yes.
5. **Enhancement:** Added new menu item "Utilities\Run Year End Processing" to MMS for running Year End Processing from MMS. This menu item is enabled when the setting "User Can Run Year End Processing" is set to Yes and the setting "MMS Security" is not set to Read Only.



### 3.2 build 64

1. **Issue:** Custom DWR may not go to the DWR record when being called from the Edit button in DataViewer in certain situations.  
**Status:** This issue has been resolved.

### 3.2 build 63

1. **Enhancement:** Improved saving and restoring MMS settings.

### 3.2 build 62

1. **Modification:** In both MMS and Custom DWR applications the Logon screen with the Fiscal Year pick list is displayed when they are launched from the App Center so the users can now change the fiscal year if needed. The User Name and Password are prefilled in from the App Center so the user only needs to click on the OK button if the default fiscal year is the desired selection. The password is encrypted and masked for security reasons.

### 3.2 build 61

1. **New Feature:** Added a checkbox to the GWAG screen called: "Warn if Detailed Assets are missing in DWR" (default to unchecked). If this box is checked then any LWAG entered for this GWAG will warn the user to enter Detailed Asset in DWR.
2. **New Feature:** Added a checkbox to the GWAG screen called: "Do not allow Equipment or Materials in DWR" (default to unchecked). If checked, the users cannot enter Equipment or Materials in DWR for this Activity. This is preventing users from inadvertently entering Equipment or Materials in Custom DWR for certain Activities like Employee Leave. Note: to use this feature, go to the GWAG screen in MMS and check this box for the appropriate Activities.

3. **New Feature:** Added Contractor Name and Contractor Source ID pick lists to the Equipment Unit screen for entering contractor information for the contract equipment. These pick lists contain items from recently entered contractor information in the Equipment Unit screen. For the Contractor Source ID, if this contractor is linked to another system, enter or copy the exact ID value for this contractor in the other system. In this case, a DataView should be provided to get that ID value.
4. **Modification:** The Yearend Processing (YEP) application now defaults the Fiscal Year pick-list in the Login screen to be the same as the latest DWR records (i.e. the “current active year”) instead of the same fiscal year as MMS.

#### 3.2 build 60

1. **Issue:** The Consumable Inventory screen is not editable when the user trying to enter new record.  
**Status:** This issue is resolved.

#### 3.2 build 59

1. **Issue:** The user can edit data in the Consumable Inventory screen for any of the resource groups.  
**Status:** This issue is resolved.
2. **Issue:** The Yearend Forecast screen is not correctly checking for missing detailed assets in the project when creating a new yearend forecast record.  
**Status:** This issue is resolved.
3. **Issue:** The controls in the MMS Data Transfer utility are not properly positioned.  
**Status:** This issue is resolved.

#### 3.2 build 58

1. **Enhancement:** Added the “Unit Description” column to the Unit Number pick-list in the Equipment grid in Custom DWR.
2. **Enhancement:** Added the “Unit Description” column to the grid in the Equipment Unit dialog.

#### 3.2 build 57

1. **Enhancement:** Increased the size of Asset Type Code from 8 to 20.
2. **Enhancement:** The Consumable Inventory screen now supports multiple Unit Cost values with corresponding Start and End Dates.
3. **Enhancement:** Added a User setting called: User Can Calculate DWR Costs. If set to Yes, the user can calculate the DWR costs in Custom DWR.

#### 3.2 build 56

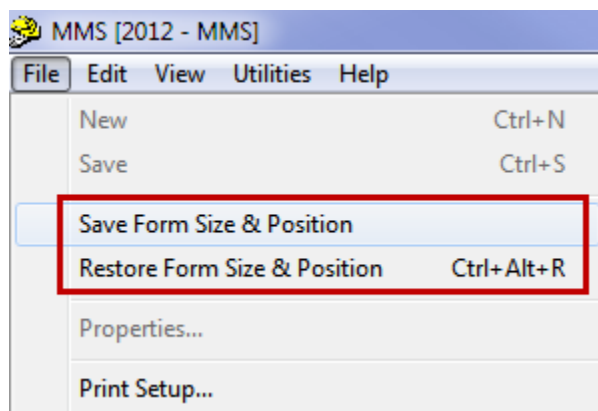
1. **Enhancement:** Significantly improved the performance of Custom DWR in certain situations.
2. **Issue:** Custom DWR raises an error when the crew name contains an apostrophe in it.  
**Status:** This issue is resolved.

### 3.2 build 55

1. **Enhancement:** Added an Agency setting called: Calculate AG Target IWR. If set to Yes, the Asset Group Target IWR column will be set to read only and the value is calculated, and the Target AWQ column will be set to editable.

### 3.2 build 54

1. **New Feature:** Custom DWR now supports being called from DataViewer Enterprise's Edit button and directly goes to the form and record defined in DataViewer Designer.
2. **Enhancement:** Added an Agency setting called: MMS 3 Read Only. This setting determines if all MMS version 3 screens including Custom DWR will be read-only for all users. This will be used once your agency has upgraded to MMS 4.
3. **New Feature:** Added the ability to save and restore the size and position of the application. This is to overcome issues some users who have two monitors experience in a Citrix environment. To use this feature, simply move MMS (and/or Custom DWR) to where you want it to always load then click on the "Save Form Size & Position" item under the File menu item as shown below. If you want to clear these settings and go back to the default behaviour, click on the "Restore Form Size & Position" menu item or press Ctrl + Alt + R on the keyboard.



### 3.2 build 53

1. **Issue:** An error message "[DBNETLIN][ConenctionOpen (SECCreateCredentials()).]SSL Security error" occurs on some standalone computers running on Windows 7 with SQL Express 2005.  
**Status:** This issue is resolved.

### 3.2 build 52

1. **Enhancement:** In Yearend Processing, added a text box to the confirmation message so the user must type the word "Yes" exactly to confirm. This is for making sure that the user has read the message before re-running the Step 1 (System List) or Step 2 (New Year Planning) because the process will delete existing data.

### 3.2 build 51

1. **Enhancement:** Added the Comments box to the Consumable Inventory screen.
2. **Enhancement:** Added an Agency setting called: Equipment Unit Numbers Must be Unique. If set to Yes then every Equipment Unit Number in the Equipment Unit screen must be unique regardless of the Equipment Code. Default to No for all agencies.

3. **Enhancement:** Added an Agency setting called: Equipment Unit Numbers Must be Unique. If set to Yes then every Equipment Unit Number in the Equipment Unit screen must be unique regardless of the Equipment Code. Default to No for all agencies.
4. **Enhancement:** Added the following controls to the Equipment Code screen in the System Lists:

- Lock Rates: Lock Rates on this Equipment Code for all Resource Groups. Default unchecked.
- Check Box for Util: Use Minimum and Maximum Utilization Rate allowed.
- Check Box for Poss: Use Minimum and Maximum Possession Rate allowed.
- Min (%) for Util: Minimum Utilization Rate allowed.
- Min (%) for Poss: Minimum Possession Rate allowed.
- Max (%) for Util: Maximum Utilization Rate allowed.
- Max (%) for Poss: Maximum Possession Rate allowed.

If the Lock Rates box is checked then the Rates boxes in the Local Equipment Code screen will be read-only for all RGs. Also, the Rates grid in the Equipment Unit screen will be read-only. The New and Delete buttons for the rates will be disabled.

If the Min/Max check box is checked then the Min and Max fields are enabled and the Rates that are allowed by the user are Rate +/- Max and Min %.

If the Min/Max check box is unchecked then the Min and Max fields are grayed out and are ignored in the rest of the software.

5. **Enhancement:** Added the button "Update Rates for All RGs" to the Equipment Code screen in the System Lists. It updates the Utilization and Possession Rates for the current Equipment code for All RGs.
6. **Enhancement:** Added the Date Created and Last Update boxes to the GWAG and LWAG screens.
7. **Enhancement:** Added the "Date Created" and "Last Update" to the Equipment Unit Navigator grid and the Rates grid in the Equipment Unit screen in Custom DWR.
8. **Enhancement:** Added the Consumable Inventory checklist box to step 3 of the Year End Processing screen. This is so individual Consumable Inventory records can be selected to carry over from the previous fiscal year.
9. **Enhancement:** Greatly improved performance on processing data for the Year End Processing screen.
10. **New Feature:** Added the Asset Register icon to the Custom DWR toolbar for running the Asset Register application from Custom DWR. Use the menu "Utilities\Asset Register Parameters" to select a form to show in Asset Register when running the Asset Register application from Custom DWR.

### 3.2 build 50

1. **Enhancement:** Added validation to the DWR Material Consumed screen to check if the Quantity Remaining is less than zero. If this is the case, a warning message will be displayed before saving the record. The users will still be able to save the records; this is just to remind them that the data may not be complete. This validation is applied when the setting "Check for Sufficient Resources in DWR Materials" is set to Yes.
2. **Upgrade:** Upgraded to the latest Database Connection components which corrects many internal defects regarding data access. This upgrade affects every feature in every screen in MMS and Custom DWR.

### 3.2 build 49

1. **Issue:** The Equipment Cost in DWR is not calculated properly when the Equipment Unit used is from other Resource Group.  
**Status:** This issue is resolved.
2. **Enhancement:** All the grid settings are now being stored in the System database instead of the Windows Registry.
3. **Enhancement:** Added validation to the DWR screen to check if the Staff Hours is greater than zero but the Crew Size is equal to zero. If this is the case, a warning message will be displayed before saving the record. The users will still be able to save the records; this is just to remind them that the data may not be complete.
4. **Enhancement:** Added validation to the DWR screen to check if the Crew Size is greater than zero but less than 1. If this is the case, a warning message will be displayed before saving the record. The users will still be able to save the records; this is just to remind them that the data may not be complete.
5. **Enhancement:** Added "Use Date Range" check box, "Start Date" and "End Date" dropdown boxes to the Charge Code screen. When the Use Date Range check box is checked, the Start Date and End Date values will be used in the DWR screen for a validation check. In this case, the DWR screen will only allow using the Charge Code that is within the date range. If no date ranges are set or if the Use Date Range is not checked for any of the existing Charge Codes then this validation is not used.
6. **Enhancement:** Added validation to the Equipment screen in Custom DWR to stop the user from saving the record if the Utilization = 0 and Possession is > 0 for Equipment.

Added the following Agency settings:

- DWR Equipment Utilization must be greater than 0 (Yes / No) (default Yes for MIT and No for all other clients)
  - Allow DWR Equipment Possession (Yes / No) (the default is No for MIT and Yes for all other clients)
7. **New Feature:** Added a check box labeled "Show Zero Values" to the Budget and Workload Balance tabs in the IAB and the Forecast and Workload Balance tabs in the YEF. If checked, all zero values are displayed; if not then the zero values are hidden. The default is unchecked.

8. **New Feature:** Added the ability to log changes in the DWR screen for the following fields when the Finish button is pressed:

- Asset Group
- Activity
- Funding Source
- Charge Code
- Work Done
- Crew Size
- Crew Hours or Staff Hours (whichever is used by the agency)

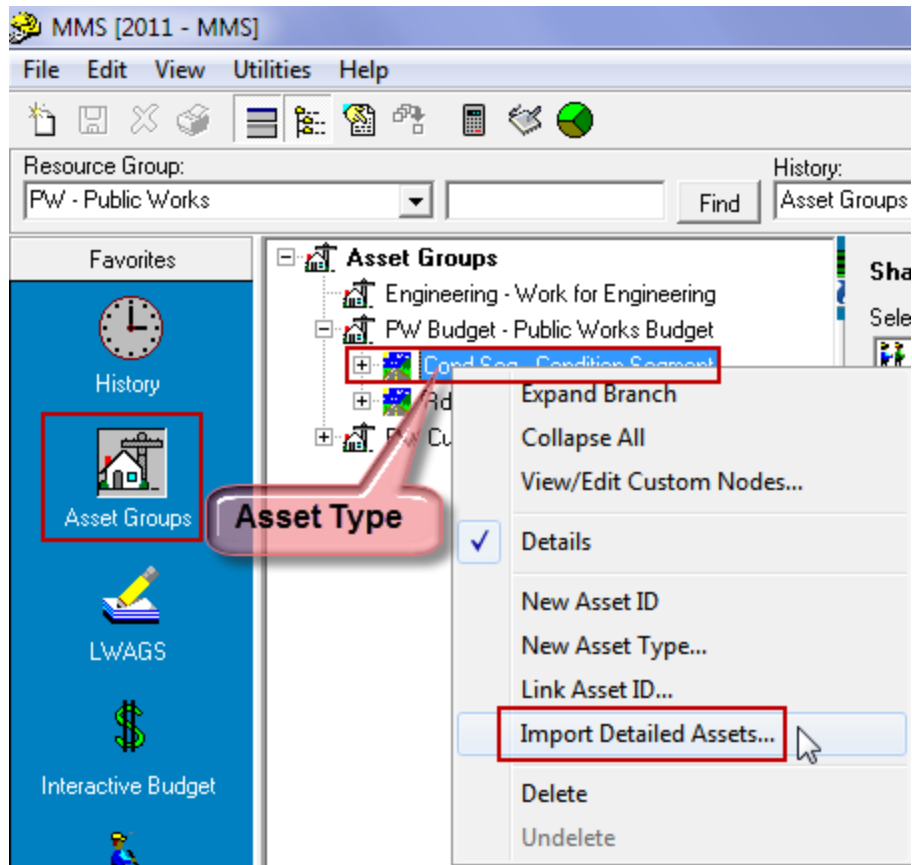
Added an Agency setting called "Log DWR Changes older than Specified Days" This setting accepts integer values only. The default is 20 for MIT and 0 for all other clients. If the value for this setting is 0 then nothing will be logged.

If a user changes one of the above fields on a DWR record after the specified days in the above setting, then the change is logged. For example, if the above setting is 20 and a user changes a DWR record that was entered 20 days ago then the changes will be logged.

Also, if a user enters a new record where the DWR Date is X number of days back from the current date then it logs the change. (X being the value from the above setting).

9. **Enhancement:** The Asset Type pick list in the Detailed Assets Import screen is now defaulted to the same one that is currently selected on the main screen. If the Asset Type does not exist in the pick list then it will be added automatically and the Configuration tab will be displayed.
10. To avoid confusion, the **Import Detailed Assets** menu item has been removed from the Asset Group node in the Asset Groups screen. It is now only available on the **Asset Type** node in the Asset Groups screen as shown below:





11. **Enhancement:** Added a new tab on the Detailed Asset Import screen called “Unlinked Detailed Assets” so the user can select which unlinked Detailed Assets to delete. The Delete Unlinked Detailed Assets button was moved to this tab. We also changed the caption of the "Data" tab to "Data to Import".
12. **Enhancement:** Added a blank line to the Column Names and UoM pick lists in the Detailed Assets Import screen as the first item in the list so that users can clear an item if needed.
13. **Upgrade:** Upgraded to the latest Database Connection components which corrects many internal defects regarding data access. This upgrade affects every feature in every screen in MMS and Custom DWR.

- Modification:** To help streamline the maintenance of MMS we have discontinued the use of the old DWR screen inside MMS. Custom DWR is now the only screen available to enter Daily Work Records. The DWR icon in the MMS sidebar still exists however the following panel will be displayed instead of the old screen. As shown below, users can open Custom DWR from a button on the screen or from a button in the toolbar.

**Note:** The Daily Work Record (DWR) screen on this panel has been discontinued. Please click on the "Run Custom DWR" button below or the Custom DWR button in the toolbar above to run the Custom DWR application instead.

Run Custom DWR

The toolbar button to run Custom DWR looks like this:



### 3.2 build 48

- New Feature:** The Equipment Unit screen in Custom DWR now allows the user to set the sorting of the navigator grid by Equip Code, Unit Number, or Type.
- New Feature:** Added the Custom DWR icon to the MMS toolbar for running the Custom DWR application from MMS.
- Enhancement:** Added the Type column to the Material Consumed screen in Custom DWR. The Type column shows the value "M" for Material and "CM" for Contract Material.

### 3.2 build 47

- Issue:** The Total Cost on the Asset Group screen is not calculating the correct value. This is caused by the cost value for each activity not being recalculated when the Average Unit Cost is changed in LWAG.  
**Status:** This issue is resolved.
- Issue:** When the user browses to a resource group that he or she does not have edit rights to and opens the Detailed Assets screen, the Length UoM and Area UoM are editable.  
**Status:** This issue is resolved.
- Enhancement:** Set display masks in MMS DWR and Custom DWR for all editable numeric fields to: #,##0.00#####. This is so that if a user enters more than two decimals, they will be visible.

4. **Enhancement:** For the agency MIT only, add validation in DWR Equipment that if the UoM for a piece of equipment is Day, the user cannot enter Util Qty more than 1 and less than 0.5 for all DWR Lines for that Date and Crew.  
Also for MIT, added validation in DWR Equipment that if the UoM for a piece of equipment is Hour, the user cannot enter Util Qty less than 0.5 for each entry and no more than 24 for all DWR Lines for that Date and Crew.
5. **Upgrade:** Upgraded to the latest Database Connection components which corrects many internal defects regarding data access. This upgrade affects every feature in every screen in MMS and Custom DWR.

### 3.2 build 46

1. **Issue:** An error message “cannot generate the next internal ID number” occurs when loading the Interactive Budget screen.  
**Status:** This issue is resolved.
2. **Enhancement:** When entering a new record in the DWR Detailed Assets screen, the Asset ID - Asset Group field will have focus so the user no longer has to click on it before typing to search for the Asset ID.
3. **Enhancement:** Improved performance in the DWR screen.

### 3.2 build 45

1. **New Feature:** Added the “Total Cost” field below the “Cost” field on the Asset Group screen that is a sum of the “Cost” field for all Activities within that Asset Group.
2. **New Feature:** Added a button called “Copy Asset Qty to All Act” on the Asset Group screen that copies the Asset Qty values for all State Labels from the current Activity in the current Asset Group to all other Service Based Activities within that Asset Group.
3. **New Feature:** Added the “Length”, “Length UoM”, “Area”, and “Area UoM” fields to the Detailed Asset screen.
4. **New Feature:** Added the “Length”, “Length UoM”, “Area”, and “Area UoM” fields to the Import Detailed Assets screen.
5. **Enhancement:** In DWR Detailed Asset screen, validate the Quantity entered with the Detailed Asset Area if the Area UoM is the same as Activity UoM.

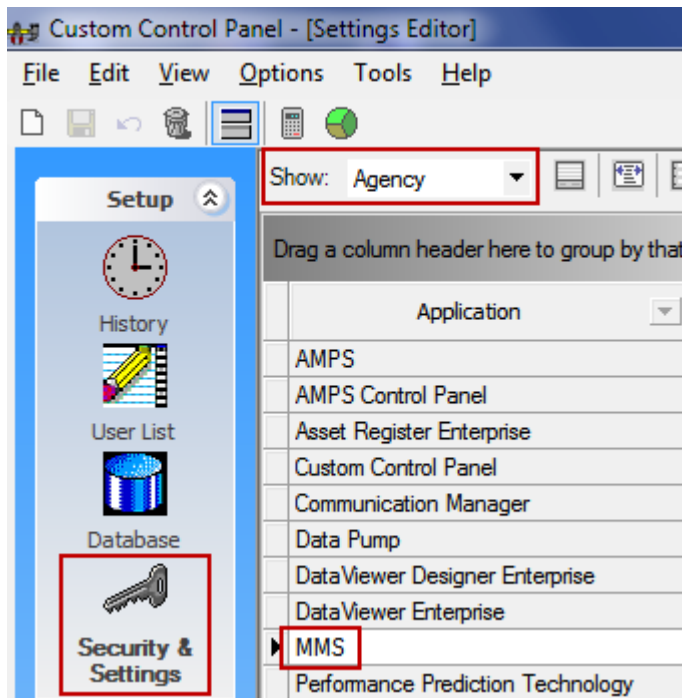
### 3.2 build 44

1. **New Feature:** Added the “Allowance Code” screen to the “Edit Names” menu for editing the employee allowance codes.
2. **New Feature:** Added "Pay Scale" and "Start Time" edit boxes to the Employee List screen.

### 3.2 build 43

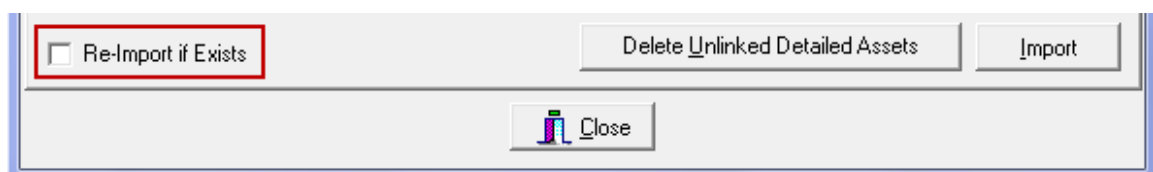
1. **Issue:** The Available People Graph in the Interactive Budget is displaying 0 instead of the correct amount  
**Status:** This issue is resolved.

2. **Enhancement:** Moved all the MMS system configuration settings from the SysConfig.dat file to the Security & Settings Agency screen in the Custom Control Panel application.

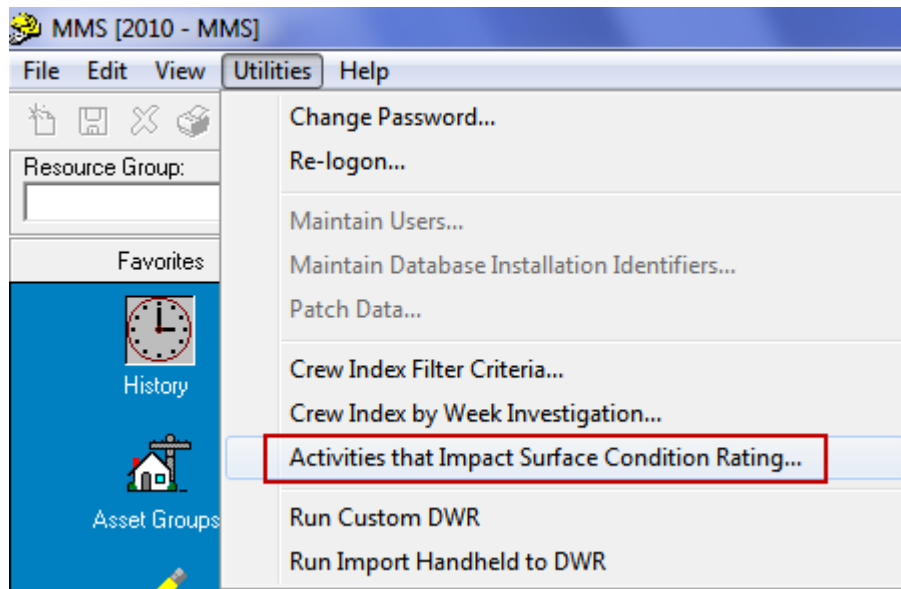


3. **Enhancement:** Moved the MMS System ID setting from the System.dat file to the Security & Settings Agency screen in the Custom Control Panel application.
4. **Modification:** Made cosmetic changes to the “Crew Index by Week Investigation” screen.
5. **New Feature:** Added a User Security setting to restrict who can change the Crew Index Investigations. The user must also have edit rights to the Resource Group (via the Maintain Users screen under the Utilities menu in MMS) if he/she wants to make changes to this screen. See the screen print below.
6. **New Feature:** Added the ability to re-import Detailed Assets that have already been imported. This feature is very useful if a user imports the Detailed Assets but made a mistake on the Descriptions or Asset Type fields. Check the “Re-import if Exists” box if you want to update existing Detailed Assets before pressing the Import button. If this box is checked, all Descriptions, Cond State, and Asset Type fields will be replaced with what is being imported by looking up the Asset ID value. A User Security setting has been added to restrict who can Re-Import Detailed Assets. By default, this feature is turned off for everyone so the Configuration Manager will need to turn this feature on for the appropriate users. See the screen print below that shows the new settings.

Re-Import check box at the bottom of the Data tab in the Detailed Assets Import utility:



7. **New Feature:** Added the ability to set which Activities would impact the surface condition rating (SCR) (like Pothole Patching for example) so that those Activities could be displayed in SCR views which would be linked by the Asset ID in MMS (DWR) to the Segment ID (or Road Identifier) in the SCR data. This will be very useful in determining why the condition for some segments improves from one year to the next without the need to look up the work history for those segments. These Activities can be selected by clicking on the menu: “Activities that Impact Surface Condition Rating” as shown below. A User Security setting has been added to restrict who can open this screen. By default, this feature is turned off for everyone so the Configuration Manager will need to turn this feature on for the appropriate users. See the screen print below that shows the new settings.  
 Contact VEMAX staff if you are interested in setting up a DataView that joins the MMS data to your SCR data.



New MMS User Security settings in Custom Control Panel:

Setting	Value	Default Value
MMS Security	Local User	Local User
User Can Change Crew Index Investigations	Yes	No
User Can Patch Data	No	No
User Can Process Extracts for all RGs	Yes	No
User Can Re-import Detailed Assets	Yes	No
User Can Select Activities that Impact SCR	Yes	No
User Can Set Crew Index Filter Criteria	Yes	No

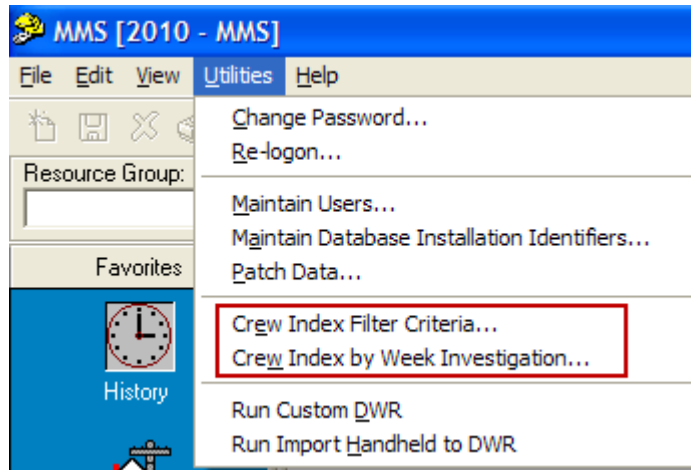
### 3.2 build 42

1. **New Feature:** Added a new menu under the “Utilities” main menu called: “Crew Index Filter Criteria”. The menu item is only enabled when the user security setting: “User Can Set Crew Index Filter Criteria” is set to “Yes”. This feature allows the user to set the filter criteria for the Crew Index by Week, Crew Index by Month, and Crew Index by Year extracts.

MMS User Security setting in Custom Control Panel:

Setting	Value
MMS Security	System Config
User Can Patch Data	Yes
User Can Process Extracts for all RGs	Yes
User Can Set Crew Index Filter Criteria	Yes

2. **New Feature:** Added a new menu under the “Utilities” main menu called: “Crew Index by Week Investigation”. This feature allows the user to view the Crew Index by Week records that required investigation and to mark them as Investigated.



### 3.2 build 41

1. **Issue:** The Year End Processing utility doesn't copy the Asset ID Descriptions data on the Asset Type Code screen when doing the Step 1 process.  
**Status:** This issue is resolved.
2. **Issue:** The Year End Processing utility doesn't copy the Detailed Assets data with the correct Asset Type IDs when doing the Step 2 process.  
**Status:** This issue is resolved.
3. **Issue:** The Year End Processing utility doesn't update the Equipment Unit Rate Start Date and End Date correctly when doing the Step 3 process.  
**Status:** This issue is resolved. Please check the “Delete Existing Records Before Copying” checkbox on Step 3 and run the process to fix the data.
4. **New Feature:** Added the “Delete Unlinked Detailed Assets” button to the Detailed Assets Import screen which allowing the user to delete the unlinked Detailed Assets for the current Asset Type. This is useful when the user wants to clean up the Detailed Assets and re-import the data.

5. **New Feature:** Added the “CI Crew” pick list to the Cost Adjustment screen. This is an optional pick list for selecting the Crew for the Crew Index Extracts.
6. **Enhancement:** The “Import Detailed Assets” navigator menu for the Asset Groups screen is now also available on the Asset Type and Asset ID navigator nodes.

### 3.2 build 40

1. **Issue:** In the Project screen, when the user selected the resource group other than the default resource group for the user and started entering a new Project it caused the activities and detailed assets to disappear.  
**Status:** This issue is resolved.
2. **Upgrade:** Upgraded to the latest Database Connection components which corrects many internal defects regarding data access. This upgrade affects every feature in every screen in MMS and Custom DWR.

### 3.2 build 39

1. **New Feature:** Added the Show All Decimals checkbox to the Work Load Distribution tab on the WAG screen. When it’s checked it will show all the decimals for the spin edit months. This is so the users can see if there are any hidden decimal values and change them if needed. This checkbox is not persistent.
2. **New Feature:** Added a button beside each of the spin edit months to the Work Load Distribution tab on the WAG screen. When the button is pressed, it will adjust that value so the total equals 100%.
3. **Modification:** Changed the validation to force the user must have exactly 100% for the workload distribution total on the WAG screen for better accuracy.
4. **New Feature:** Added the Show All Decimals checkbox to the Work Load Balance tab on the Interactive Budget screen. When it’s checked it will show all the decimals for the month columns. This is so the users can see if there are any hidden decimal values and change them if needed. This checkbox is not persistent.
5. **New Feature:** Added the Total column to the Work Load Balance tab on the Interactive Budget screen. It displays the total value in full 8 decimals for doing visual checking or validating the summation of the period values.
6. **Modification:** Changed the validation to force the user must have exactly 100% for the workload balance total on the Interactive Budget screen.
7. **Issue:** In the Custom DWR screen, when the user selected the resource group other than the default resource group for the user and started entering new DWR record, it caused the Crew value to be blank when the New Line button was pressed.  
**Status:** This issue is resolved.
8. **New Feature:** Added the Work ID # column to the Detailed Asset grid in DWR. This column is only visible when the setting value is set to Use Work Identification Number=1 in the SysConfig.dat file.

9. **Modification:** The EarnedValueByWeek, EarnedValueByMonth, EarnedValueByYear extracts have been renamed to CrewIndexByWeek, CrewIndexByMonth, CrewIndexByYear respectively.

10. **Enhancement:**

Added the following fields to the DWRLineExtract, CrewIndexByWeek, CrewIndexByMonth, CrewIndexByYear extracts:

**CREW\_COST** = WORK\_DONE \* WA\_AVG\_UNIT\_COST

**CI\_COST\_PLANNED** = (CREW\_HRS / WA\_STANDARD\_HOURS) \* AVG\_DAILY\_COST

**CI\_COST\_ACTUAL** = Total DWR Line Cost (which is the "Cost" field in the DWRLineExtract)

**CI\_COST\_ACTUAL** = CREW\_COST / CI\_COST\_PLANNED

**CI\_COST\_ACTUAL** = CREW\_COST / CI\_COST\_ACTUAL

11. **Issue:** The Project screen causes an error on new record when the Next button is pressed.

**Status:** This issue is resolved.

3.2 build 38

1. **Issue:** When the "Update LWAG Details tab" menu from the GWAG screen is pressed, the data is being updated correctly, but the LWAG screen is not showing the new values until MMS is restarted. This is just a simple refreshing issue.

**Status:** This issue is resolved.

2. **Modification:** Changed the DWR Materials dialog to show the Detailed Asset pick list only when the setting "2150 – Override Materials by Detail Asset Calculation" is set to Yes. Also changed the process to override the calculation only when the Detailed Asset is selected in the DWR Materials dialog.

3. **New Feature:** In the Asset Group screen, column widths for the Service State Labels grid are now saved automatically.

4. **Enhancement:** In the Labour, Equipment and Materials screens width of the Code field and the drop-down columns are wider so the data is not cut off.

3.2 build 37

1. **Issue:** The new grid on the Detailed Asset dialog does not support incremental search.

**Status:** This issue is resolved. Reverted to the original grid.

3.2 build 36

1. **New Feature:** In the Detailed Assets Import utility, added the ability to import detailed assets from the SQL tables or views.

2. **Enhancement:** In the Asset Group screen, made the controls bigger to fit on larger screen resolutions.

3. **Enhancement:** In the Custom DWR screen, improved performance on navigating the DWR records in the navigator.

4. **Issue:** The Handheld to MMS Import utility does not import the records with shared detailed asset.

**Status:** This issue is resolved.



5. **Issue:** Cannot close the Custom DWR screen when the connection to the SQL server is lost.  
**Status:** This issue is resolved.
6. **Modification:** Changed the Handheld to MMS Import utility so it no longer requires the WRR database attached to run it.

### 3.2 build 35

1. **New Feature:** Added the following new extracts:

DWR Line  
Earned Value by Week  
Earned Value by Month  
Earned Value by Year

### 3.2 build 34

1. **New Feature:** Added the "Employee #" edit box and "Active" check box to the Employee List dialog in Custom DWR.
2. **New Feature:** Added the "Copy Monthly Rate Periods" checkbox to the Year End Roll Over screen in the Year End Processing utility. If it's checked, it copies all the equipment unit rate records containing either monthly possession or utilization rate values.
3. **New Feature:** Added the "Change Approved Budget" dialog to the YEF screen. This dialog is available for Configuration Manager only. The user can right click on the YEF active line to show the "Change Approved Budget" menu item.
4. **New Feature:** Added the "Change LWAG Code" dialog to the LWAG screen. This dialog is available for Configuration Manager only. The user can right click on the LWAG Navigator to show the "Change LWAG Code" menu item.
5. **New Feature:** Added the "Support Task" checkbox to Cost Adjustment screen.
6. **New Feature:** Changed the DWR Materials dialog to include Detailed Asset pick list. If the setting "2150 – Override Materials by Detail Asset Calculation" is set to Yes, it overrides the calculation that prorates Materials by Detailed Asset so that it uses the entered quantity and the cost of that quantity instead of prorating.

### 3.2 build 33

1. **New Feature:** Added the "Use Existing File" Operation option to the "Add Document/Image File" dialog in the GWAG and LWAG screens.
2. **Enhancement:** Added record locking to the Projects screen. This prevents multiple users from editing the same record at the same time.
3. **Issue:** The Projects screen does not save the detailed asset data properly.  
**Status:** This issue is resolved.
4. **Issue:** The GWAG and LWAG reports cause "String or binary data would be truncated" error when trying to print the report.  
**Status:** This issue is resolved.

### 3.2 build 32

1. **Enhancement:** Added the “Equipment Unit Rate” decimal setting to the SysConfig.dat file:

[Decimals]

Equipment Unit Rate=2

2. **Issue:** The Monthly Rate columns in the Equipment Unit screen do not save the values when the Apply button is pressed.  
**Status:** This issue is resolved.
3. **Issue:** The “DWR Performance By Funding Source” extract does not show the correct funded values. It contains the values from the forecast columns.  
**Status:** This issue is resolved.

### 3.2 build 31

1. **New Feature:** Added the “Rate Code” screen to the “Edit Names” menu for editing the employee rate codes.

### 3.2 build 30

1. **Issue:** The Cost Adjustment screen causes an error “[SaveRecord][UpdateCostRecord] qryDWR\_Line: Field ‘DWRL\_LABOUR\_IND’ not found” when the Apply button is pressed.  
**Status:** This issue is resolved.

### 3.2 build 29

1. **Modification:** In the Year End Forecast screen, we added the “For Scheduling” flag to indicate if the forecast is approved for scheduling for internal processing purposes.
2. **Modification:** Changed the “Activity Progress” extract to use the planned values from the Budget if the latest approved forecast is approved for scheduling.
3. **Issue:** The “DWR Performance By Funding Source” extract contains invalid funded cost values.  
**Status:** This issue is resolved. First, users need to press the “Update Planned Budget Amount” from the Year End Forecast screen. Then re-create the “DWR Performance By Funding Source” extract.
4. **Issue:** Creating new forecast record causing the workload distribution values to be zero if the setting ‘Show Condition States in YEF’ is set to “No”.  
**Status:** This issue is resolved.
5. **Issue:** The LWAG Report (rpt41) prints blank text when the font “MS Sans Serif” is used for the rich text.  
**Status:** This issue is resolved.

### 3.2 build 28

1. **New Feature:** In Custom DWR, added the “Edit\Employee List” menu item which opens the “Employee List” dialog and the “Labour” button which opens the “Labour” dialog. The intent is to list individual employees who work on each DWR to get better costing and to ensure more accurate DWR reporting. Employees often work on several crews during the day and there is an issue that hours for some employees may be missed or duplicated.

2. **New Feature:** MMS now supports charging Equipment by the month or by Usage and/or Possession. In Custom DWR, we added the “Monthly Poss Rate” and “Monthly Util Rate” columns to the grid on the Equipment Unit dialog. In previous versions of MMS, only the costs for the equipment calculated when the equipment is used, and the equipment may not be used for many days each month. To handle this, we now recalculate an effective daily rate periodically throughout the year when the “Monthly Poss Rate” or “Monthly Util Rate” is greater than zero.

### 3.2 build 27

1. **Enhancement:** MMS now supports Windows Server 2008.

### 3.2 build 26

1. **Issue:** The Asset Group screen allows the user to add LWAG as Condition Based even when the Condition Based box is unchecked in the GWAG’s Properties screen.  
**Status:** This issue is resolved
2. **Issue:** In the YEF screen, the Forecast columns are white even the user changes to a Resource Group that they only have Read-only access. Those columns should be gray.  
**Status:** This issue is resolved

### 3.2 build 25

1. **Modification:** Changed the re-transfer process and renamed the “CoDES to MMS Re-transfer” options in Custom DWR from “Re-retransfer All Missing Data” to “Re-retransfer All Inconsistent Data” and “Re-retransfer RG Missing Data” to “Re-transfer RG Inconsistent Data”. The inconsistent data includes the missing data, duplicate data, etc.
2. **Modification:** Changed the Cost Adjustment screen to allow entering duplicate line records.
3. **Enhancement:** Added more validation to check for missing Project Detailed Asset in the Project screen before saving the record.
4. **Enhancement:** Added more validation to check for missing Project Detailed Asset in the Budget screen before creating a budget then display the missing items in the “Missing Project Detailed Asset” dialog.
5. **Enhancement:** Added more validation to check for missing Project Detailed Asset in the Yearend Forecast screen before creating a year-end forecast then display the missing items in the “Missing Project Detailed Asset” dialog.

### 3.2 build 24

1. **Upgrade:** Upgraded to the latest Database Connection components which corrects many internal defects regarding data access.
2. **Issue:** The Asset Group, Project, and Charge Code screens take a long time to delete the record when the Delete menu is pressed.  
**Status:** This issue is resolved
3. **Issue:** The validation message dialog box takes too long to show up when the Apply button is pressed and the record does not pass the validation.  
**Status:** This issue is resolved

4. **Issue:** MMS shows both the validation message and error on saving message when the Apply button is pressed and the record does not pass the validation. It should only show the validation message.

**Status:** This issue is resolved

### 3.2 build 23

1. **Issue:** An error occurs when the Apply button is pressed in the Shared Detailed Asset screen.

**Status:** This issue is resolved.

2. **Issue:** The “Support Task” check box is still editable when all other controls are read only in the Custom DWR screen.

**Status:** This issue is resolved.

3. **New Feature:** Added the “Re-logout” menu to the Custom DWR screen.

### 3.2 build 22

1. **Issue:** The tree list for the Consumable Inventory screen cuts off the text when the length is greater than 40.

**Status:** This issue is resolved.

2. **Modification:** Set the Purchases tab on the Consumable Inventory/Sales Purchases dialog box as default tab.

### 3.2 build 21

1. **New Feature:** Added the “Support Task” check box to the Custom DWR screen for indicating that the work done is a support task. If it is checked, the Crew Days and Crew Hours will be set to zero for the Performance Extracts. The user can also use the new user-defined function “[dbo].[fnvmxGetValueBySupportTask] (@strSupportTask VARCHAR(3), @decValue DECIMAL(19, 8))” in DV Designer if necessary.

2. **New Feature:** Added the “Description” memo box to the Custom DWR and Cost Adjustment screens so that the user can put in a brief note about the line.

3. **New Feature:** Added the “Update LWAG Details Tab” navigator menu to the GWAG screen to update the GWAG Code, Work UoM, Work Program, Asset Feature, and Admin Type to the associated LWAGs (in the same fiscal year) and for all resource groups.

4. **Modification:** The field sizes for the Detailed Asset description fields 1 to 6 have been changed from 50 to 200.

### 3.2 build 20

1. **New Feature:** Added the ability to include the Asset Group column in the Workload Balance grid in the IAB. Note users can populate this column for existing budgets that are not approved by creating a new budget and copying the existing values from the current budget.

2. **New Feature:** Added the following new DataViews in the MMS Configuration:
  - a. **Activity Progress Cal** – to show the Planned Work Qty vs Actual Work Qty and Planned Budget vs Actual Spent accumulated by the 12 work periods based on a calendar year for those agencies that have Fiscal Years starting in January.
  - b. **Project List** – added a Master / Detail level to show the Detailed Assets as well as AWQ and Costs.
3. **Modification:** Made changes to the following MMS DataViews:
  - a. **Activity List** – switched the Activity Description from the extended memo control to a text control to make this view consistent with all other views.
  - b. **DWR Equipment** – modified the SQL Views to add the Crew Days & Min Usage fields to the output. We have added two calculated fields (Poss Per Day & Util Per Day).

The MinUsage field is added have added so users can do a data summarization and get the usage information on those units where there is a monthly charge. When the DWR cost differs from the Monthly, we are adjusting the Equipment Unit rate as needed (and then recalculating the DWR the user will end up with the right total cost and the re-calc automatically distributes to detailed assets). The fields are added so that users can do a data summarization of DWR Equipment usage by Res Code and then get the actual Poss Qty and Util Qty by day for comparison back to the LWAG. The user can use this information to “fine tune” the quantities on the LWAG Equipment tab to better reflect what we are actually getting (summarize by activity).
  - c. **Project List** – added a Master / Detail level to show the Detailed Assets as well as AWQ and Costs.
  - d. **Material By Det Asset** – made visible the following fields: Work Done, Crew Hours, Staff Hours, Consumable ID.
4. **Issue:** The “Staff Hrs” field in the DWR Details Flat MMS DataView contained two spaces that caused the DataView to fail when the SQL Parser trimmed the extra space.  
**Status:** This issue is resolved.
5. **Issue:** The “Proj Descr” field in the Project List Flat MMS DataView contained two spaces that caused the DataView to fail when the SQL Parser trimmed the extra space.  
**Status:** This issue is resolved.
6. **Issue:** Matl By Det Asset MMS DataView to correct a issue where the calculated fields are not correctly specified. The original view does not have the calculation dependencies specified in the Bin/Calculated column. As a result, DataViewer does not display any of the calculated fields in the data summary.  
**Status:** This issue is resolved.
7. **Issue:** The value for the YEF Graph -Workload Forecast is not calculated correctly.  
**Status:** This issue is resolved.
8. **Issue:** There is a issue with editing project records in IAB Workload Balance tab when the same activity exists in multiple projects. The new value is duplicated to all projects with the same activity.  
**Status:** This issue is resolved.

9. **Issue:** The IAB Workload Balance tab does not refresh properly when the user switches to a different tab and comes back to it.  
**Status:** This issue is resolved.
10. **Issue:** When a new budget is created with copy values from existing budget, it does not copy the values correctly for the project records.  
**Status:** This issue is resolved.
11. **Enhancement:** Improved performance on loading the Budget tab.
12. **New Feature:** Added "Asset Group" column to the IAB Workload Balance grid. To show this new column, the setting "Include AG in IAB Workload Balance" must be set to "Yes".

### 3.2 build 19

1. **Modification:** Changed the "CoDES to MMS Re-transfer" feature in Custom DWR to show the re-transfer log information. This feature applies to SHT agency only.

### 3.2 build 18

1. **Issue:** The error "Arithmetic overflow error converting numeric to data type numeric" occurs when creating the "DWR Performance by Funding Source" extract.  
**Status:** This issue is resolved.
2. **Issue:** The error "String or binary data would be truncated" occurs when creating the "DWR Work Done by Detailed Asset" extract.  
**Status:** This issue is resolved.
3. **Issue:** The "Balance to Zero" feature does not work properly in the YEF screen for Project records.  
**Status:** This issue is resolved.

### 3.2 build 17

1. **Upgrade:** The MMS reports and DataTransfer have been upgraded to support version 2 of the Microsoft .NET Framework.  
The [iBOSToolsPrerequisites\\_2\\_0.exe](#) install is needed for this version of MMS.
2. **New Feature:** Added "Copy entered values from Budget" check box and pick-list to the "Create New Budget" dialog. If the check box is checked and a budget is selected, once the new budget is created, all of the editable values from the selected budget will be copied to the new budget for the corresponding records.
3. **New Feature:** Added a new extract called: "Activity Progress" for showing the Planned Work Qty vs Actual Work Qty and Planned Budget vs Actual Spent accumulated by the 12 work periods.
4. **Modification:** The YEF Anomaly Report values are now rounded consistently to three decimals to eliminate the reporting of numbers with very small differences after the 4<sup>th</sup> decimal place.

### 3.2 build 16

1. **New Feature:** Added the “Utilities\Patch Data” menu item to the MMS main form. The menu item is only enabled when the “User Can Patch Data” user security setting is set to “Yes”. This feature allows the user to patch the MMS data using a patch file provided by VEMAX.
2. **New Feature:** Added the SHT\_XFR tables to the MS DataTransfer utility for the SHT agency. The data in the SHT\_XFR tables is for the Resource Group transfer.

### 3.2 build 15

1. **Enhancement:** Improved support for MS SQL Server 2005, MS SQL Server 2005 Express Edition and Windows Vista.

### 3.2 build 14

1. **Modification:** MMS now stores the login information, user form layout settings and user grid settings to the system database.

### 3.2 build 13

1. **Issue:** Report 40 – Activity Progress Report By Asset Group does not show the target values and the asset group activity records from the budget are missing in this report.  
**Status:** This issue is resolved.

### 3.2 build 12

1. **Modification:** Asset Groups screen: disabled the menu “Import Detailed Assets” when the navigator is empty.
2. **Modification:** Resources screen: disabled the menu “Update Rates from System Resources” when the navigator is empty.
3. **Enhancement:** Cost Adjustment and DWR screens: increased the width of the drop downs for the pick lists.
4. **Issue:** LWAGS screen: when the menu “View/Show All Records” is checked, the user was not able to copy or create a new activity if there were deleted resource records in the WA Resource table.  
**Status:** This issue is resolved.
5. **Issue:** LWAGS/GWAGS screens: when a new resource record (Labour/Equipment/Materials) is inserted it cannot be deleted without refreshing the grid.  
**Status:** This issue is resolved.
6. **Enhancement:** Approved Budget DataView: added “Wrk Prog” and “Wrk Prog Descr” fields.
7. **Enhancement:** Removed unnecessary locking of records before inserting and editing records.
8. **Modification:** Minor cosmetic changes to the “Activity Progress Report By Project” (MMS\_rpt40\_1.rpt).

9. **New Feature:** Added the following new YEF DataViews based on the YEF extracts:
  - YEF Details
  - YEF Resources
  - YEF Work Qty Dist

10. **Issue:** YEF Work Qty Dist Extract: some of the fields were not populated.  
**Status:** This issue is resolved.

### 3.2 build 11

1. **Modification:** Cost Adjustment screen: The “New Line” button, which is posting the DWR record, will now automatically remove all single quotes from the Code field because single quotes are not supported in SQL text.

### 3.2 build 10

1. **New Feature:** Added a new DWR Performance DataView called: “[DWR Perf IAB YEF By CS](#)” that is based on the “[DWR Performance by Condition State](#)” Extract. This DataView is used to compare the IAB budget and YEF budget amounts.  
**NOTE:** Changes have been made to the processing of the Update Planned Budget Amount functions in IAB and YEF to accommodate this new view.  
If an approved IAB already exists and not an approved YEF then the “DWR Performance by Condition State” Extract will automatically get the IAB values. If an approved YEF already exists, however, then the IAB values cannot be displayed. This means that both the IAB and YEF values can only be displayed if a YEF is approved after installing this version of MMS.
2. **Modification:** YEF screen: when approving YEF “For Scheduling”, an additional message is asking the user if he/she wants to run the “Update Planned Budget Amount”. If the answer is “Yes”, it runs the updates automatically.
3. **Enhancement:** Upgraded our third-party SQL Server connection components to improve support of MS SQL Server 2005.
4. **Issue:** YEP: occasionally Steps 2 and 3 will fail if the databases are on an MS SQL Server 2005 server.  
**Status:** This issue is resolved.
5. **Issue:** YEP: when the user runs step 3 and then renames project(s) in the new fiscal year and runs step 3 again, a “key violation” error message was raised and the process failed.  
**Status:** This issue is resolved.
6. **New Feature:** MMS and Custom DWR: added checking of the Yearend Processing status after the login so that users are informed if the YEP Step 2 process failed for that Resource Group and Fiscal Year. This is so the users know not to make any changes in MMS and Custom DWR until Step 2 is completed properly.
7. **Enhancement:** Cost Adjustment: added the ability to auto search in the “Adjustment Type” pick-list.



### 3.2 build 9

1. **Modification:** DWR, Cost Adjustment and Project - Detailed Asset pop-up screen: modified pick list to show the detailed asset ID and Asset Group, as well as display them on the grid, so the ID is used across different asset groups and only one will be highlighted.
2. **Modification:** changed the path to User Config. folder, so it includes the user computer name instead of the MMS user name, and if more than one user logs into MMS on a Server with the same MMS Login, then one user's settings will not affect the others.

### 3.2 build 8

1. **Modification:** IAB and YEF screens: since the System Configuration login can be setup to have access to many Resource Groups, using "Interactive Budget Editable Fields" and "Yearend Forecast Editable Fields" screen (from the View menu) could cause confusion, so the View menu "Columns..." is no longer available in IAB and YEF.
2. **Issue:** YEF screen: when creating a new YEF, records for some project activities were duplicated.  
**Status:** This issue is resolved.
3. **Issue:** IAB screen: when the values in the editable columns on the Budget grid for the project records were adjusted and the user changes tabs, the adjusted values were set to zero. Deferred AWQ and Deferred Cost were calculated incorrectly. Also, when editing Funded IWR column of a project record for the quantity based activity where Asset Qty is not zero, the value was not calculated properly and an incorrect message was displayed: "Cannot edit a funded IWR for a work activity which is quantity based. The funded IWR is always zero". This message was replaced with a new message: "Cannot edit a funded IWR for a project work activity which is quantity based. The funded IWR is calculated."  
**Status:** This issue is resolved.
4. **Issue:** IAB screen - Budget grid: the messages: "Cannot edit a funded IWR for a work activity which is quantity based. The funded IWR is always zero." and "Cannot recalculate because Asset Qty or ADP is zero.", were displayed even though the user only clicked on the record, but not changed it.
5. **Issue:** YEP: the following error was displayed when running step 2 of Yearend Processing a second time in a Microsoft SQL Server 2005 database:  
"Error occurred when processing the data."  
**Status:** This issue is resolved.
6. **Modification:** YEP: new fiscal year label is no longer created before the user starts processing step 1.
7. **Issue:** YEP: when the user runs step 1 then step 2 right after, without re-login, the "Process Status" information was not updated for the step 2.  
**Status:** This issue is resolved.
8. **Issue:** YEP: Step 2 copies inactive records into the resource tables.  
**Status:** This issue is resolved.

9. **New Feature:** Custom DWR and YEP: added the checking of the minimum MMS version required to be able to run Custom DWR and YEP.
10. **Issue:** System List: Priority Code screen: on an empty grid, when trying to insert a new record, a wrong message was displayed and the user could save a record without setting default for the code after the record was cancelled.  
**Status:** This issue is resolved.
11. **Issue:** System List: Planning Periods screen: when the user who had rights to a Resource Group and as a Configuration Manager, tried to update Work Days on the grid in the System List, the grid in the Local List was updated.  
**Status:** This issue is resolved.
12. **Issue:** System List: Resource Group, Asset Group List and Material Class Code and Status Code screens: when on a deleted record and trying to add a new record, buttons and screen's controls were not updated correctly.  
**Status:** This issue is resolved.
13. **Issue:** MMS Side Bar: an error occurred ("Dataset not in edit mode") when updating custom nodes using "View/Edit Custom Nodes" menu.  
**Status:** This issue is resolved.
14. **Enhancement:** Project screen: added internal checking and automatic correction of the Project's Detailed Asset Indicator.
15. **Issue:** DWR and Custom DWR: would allow a read-only user to re-calculate the record when exiting the screen.  
**Status:** This issue is resolved.
16. **Issue:** DWR and Custom DWR: data to Calculate DWR Cost included deleted" records (i.e. records marked for deletion) from the WA Resource table.  
**Status:** This issue is resolved. Note: there should never be any "deleted" records in the WA Resource table so this correction is mostly just a fail-safe.
17. **Issue:** Funding Source screen: when Funding Limit was set to zero and the user tries to enter a Target Cost, an error message "Division by zero error" was displayed.  
**Status:** This issue is resolved.
18. **Issue:** LWAGS screen: when copying an activity or creating a new one, deleted resource records (if existed) were inserted into the WA Resource table.  
**Status:** This issue is resolved.
19. **Issue:** Resources screens (e.g. Equipment): when deleting a resource record, function checking if the record is linked to GWAGS/LWAGS, returned wrong results, which was based on deleted records in WA Resource table.  
**Status:** This issue is resolved.
20. **Issue:** DV Extracts: "IAB Resource Requirements" and "YEF Resource Requirements": data included deleted resources records.  
**Status:** This issue is resolved.

21. **Issue:** Run Reports: Rpt6 (“Resource Distribution by Activity”) and Rpt58 (“Yearend Forecast Resource Quantity”): data included deleted resources records.  
**Status:** This issue is resolved.

22. **Modification:** Added last update fields for DWR:  
“DWR Last Update” and “DWR Line Last Update” to the following SQL Views:

vwdveDwrDetailedAsset  
vwdveDwrDetailsFlat  
vwdveDwrDetailsDetail1  
vwdveDWRLabourDetails  
vwdveDwrEquipmentUse  
vwdveDWREquipUnitDetails

### 3.2 build 7

1. **New Feature:** YEP now supports processing of multiple years.
2. **Issue:** GWAGS screen: user was not able to enter activity with the same code for different fiscal years.  
**Status:** This issue is resolved.

### 3.2 build 6

1. **Issue:** Custom DWR, Equipment Unit screen: User was able to enter a value greater than 100 % into the Availability field.  
**Status:** This issue is resolved.
2. **Issue:** All Run Reports were writing an old temp database name into the “RunReportAppParams.ini” file.  
**Status:** This issue is resolved.
3. **Issue:** Cost Adjustment screen: the Apply button was enabled for read only users.  
**Status:** This issue is resolved.
4. **Enhancement:** Added better support for Microsoft SQL Server 2005.
5. **Enhancement:** Added better support for accessing the MMS database with a non-standard name i.e. a database that is not called: “vmxIBOSMMS”.
6. **Issue:** YEP: Consumable Inventory screen: the Start Quantity was not calculated correctly.  
**Status:** This issue is resolved.
7. **Issue:** YEP: the “Process Status” was not updated correctly for each step.  
**Status:** This issue is resolved.

### 3.2 build 5

1. **Issue:** LWAGS/GWAGS screen - report “Rpt41 - Work Activity Guideline” is not able to run in Cyrix. Note: all run report exe’s have been modified so the same issue does not occur with them as well.  
**Status:** This issue is resolved.

2. **Issue:** In some situations, the Utilization Usage Cost in the DWR Equipment Details DataView was not updated properly.  
**Status:** This issue is resolved. The correction to this issue was made in DWR and Custom DWR. Note: users will need to recalculate the costs for existing data if the costs are not correct.
3. **New Feature:** MMS, Custom DWR, YEP, and DataTransfer now update the Current Users list in the System database.

#### 3.2 build 4

1. **Issue:** YEF screen: when creating a new YEF, the Forecast Amount for the projects with Detailed Assets showing the Condition State, was not calculated correctly and was less than the Spent to Date value.  
**Status:** This issue is resolved.
2. **Modification:** YEF screen: added logic to Update "Actual Quantities" menu to correct the existing YEF projects data, if the Setting "Show Condition States in YEF" in the Custom Control Panel is set to "Yes". Note: this setting currently only applies to Saskatchewan Highways so all other agencies are unaffected by this modification.
3. **Issue:** YEF and IAB screen: while scrolling down on any of the grids, passing the last row, an additional row with no data was inserted.  
**Status:** This issue is resolved.
4. **Modification:** Improved error checking for the "System.dat" file.

#### 3.2 build 3

1. **Issue:** DWR: when DWR was set to read only for all users, the Delete Line button was still enabled and the user could delete records.  
**Status:** This issue is resolved.
2. **Issue:** DWR: when DWR was set to read only for all users, the "Calculate DWR Costs" menu was still enabled and the user could recalculate the records.  
**Status:** This issue is resolved.

#### 3.2 build 2

1. **New Feature:** MMS About form: the user can now view the Details section of the About screen in Notepad by double clicking in the Details box. This is useful if the details need to be sent to Vemax for support.
2. **Modification:** Custom DWR will now read the Release Notes and the Help files from the main MMS folder instead of from the Utilities folder provided that the "ParentConfig.dat" file in the Utilities folder is set correctly.
3. **Issue:** Equipment Unit screen: when editing a record on the grid and saving it, the header (top) part of the screen was still read only, after the Apply button was pressed.  
**Status:** This issue is resolved.

4. **Issue:** Equipment Unit screen: when editing a record on the grid and editing and saving a master record at the same time, the validation for the grid record did not work correctly when closing the form.  
**Status:** This issue is resolved.
5. **Issue:** Asset ID screen: when adding the first record of an Asset ID for an Asset Type, the descriptions captions were not displayed correctly.  
**Status:** This issue is resolved.
6. **Modification:** Cost Adjustment and DWR screen: Modified the Delete Line button so that it is enabled when the Delete menu is enabled and the Delete Line button will now delete the entire record if there is only one line (just like the Delete menu).
7. **Modification:** Cost Adjustment screen: The Apply button will now automatically remove all single quotes from the Code field because single quotes are not supported in SQL text.
8. **Issue:** All the Performance Extracts show duplicate records if the Extracts are generated with the "All Resource Groups" check box selected.  
**Status:** This issue is resolved.
9. **Issue:** A transaction lock error would occur occasionally when running the Extracts with the "All Resource Groups" check box selected.  
**Status:** This issue is resolved.
10. **New Feature:** The Release Notes menu will now show the PDF version of the release notes file if Adobe Reader is installed. If Adobe Reader is not installed, the release notes will be displayed as they have in previous versions.

### 3.2 build 1

1. **Issue:** Run Reports application for the reports:
  - Rpt62 - Equipment PM/Repair Report
  - Rpt55 - SHT CoDES Data Entry
  - Rpt55CE - SHT CoDES Data Entryraised an error when the day was greater than 12 for the selected date range.  
**Status:** This issue is resolved.
2. **Modification:** Reformatted reports: rpt8, rpt9, rpt40\_1 and rpt40\_2.
3. **Issue:** Data Viewer: views: IAB Local and YEF raised an error because they were pointing to the Temp database that doesn't exist anymore.  
**Status:** This issue is resolved.
4. **Issue:** LWAGS/GWAGS screen: a read-only user could copy the activity into the same resource group.  
**Status:** This issue is resolved.
5. **Modification:** Project screen: removed the message that asked the users if they want to re-calculate because if a user chooses not to re-calculate then the total will be wrong.
6. **Issue:** Project screen: Total Project Cost was not calculated correctly on occasion.  
**Status:** This issue is resolved.

7. **New Feature:** Project screen: added better detection when the Total Cost needs to be recalculated.
8. **Modification:** Project screen: Changed the caption for the menu item from: "Calculate Avg Unit Cost For All Projects" to: "Calculate Costs For All Projects". This menu item always calculated all costs for all projects but the caption on the menu item implied that only the Avg Unit Cost was calculated (which was not quite true).
9. **Modification:** Project screen: the Recalculate button, will now calculate all the costs of all the activities for the current project.
10. **Issue:** Detailed Assets Import screen: When a data field was selected for the Resource Group column and the Resource Group Code value(s) did not match the existing records in the Resource Group table, the Resource Group ID column did not have a value. Therefore, the imported record was not linked or visible, and the displayed message saying that the record will be imported into the current Resource Group was misleading.  
**Status:** This issue is resolved.
11. **Modification:** Asset Type Code screen: added Condition State field to the grid, which will be displayed on the Asset ID screen and Link Asset ID screen's grids.
12. **Issue:** Equipment Unit screen: when editing a record on the grid and editing and saving a master record at the same time, the validation for the grid record did not work correctly.  
**Status:** This issue is resolved.

### 3.2 build 0

1. **Issue:** Year End Processing: step 1 and 2: even though the processing failed, it did write status "completed" into the table.  
**Status:** This issue is resolved.
2. **Modification:** Year End Processing: cleaned up the old source code.
3. **New Feature:** added Update DB Version checking to: Custom DWR, YEP, DWR Viewer.
4. **Modification:** Moved tables from the Temp database to the main database and removed all unused tables in the main database. Note: the Temp database (normally called vmxIBOSMMSTempData) is now obsolete and can be removed from the server. This was done to simplify DataViews and to improve performance in both MMS and DataViewer Enterprise.
5. **Modification:** Converted Run Report executables from Delphi to dot Net so that the old Crystal Reports 9 Run time is no longer needed. Only the dot Net version of the Crystal Reports Run time (currently: CrystalReportsSetup2005\_02\_24.zip) is now required.
6. **Modification:** All reports: replaced tables from the Temp database with tables from the Main database.
7. **Issue:** Cost Adjustment detailed asset screen: the OK and Cancel buttons did not work properly when clicked on them several times.  
**Status:** This issue is resolved.

8. **Modification:** DWR screen: corrected internal keys when recalculating DWR's.
9. **Issue:** For BMCC, some of the database functions in MMS would not work because of a database Collation issue.  
**Status:** This issue is resolved.

#### 3.1 build 20

1. **Issue:** Import Detailed Asset screen: Resource Group ID field was not populated in the table when importing detailed asset, so the imported records were not showing up in the link detailed asset screen.  
**Status:** This issue is resolved.
2. **Modification:** Import Detailed Asset screen: improved messages that are displayed.
3. **Issue:** Link Asset ID's screen: the "Linked and Unlinked for RG" option is not displaying the unlinked Detailed Assets properly.  
**Status:** This issue is resolved.

#### 3.1 build 19

1. **Issue:** Yearend Forecast screen: when creating a new Yearend Forecast or updating actual quantities for an existing Yearend Forecast, the "Spent To Date" values were wrong (equal to zero) for activities added into Asset Groups screen as quantity or inventory based.  
**Status:** This issue is resolved. Please Update the Actual Quantities (right-click on the YEF that needs to be updated) or re-create the Yearend Forecast(s) to get the corrected values.
2. **Modification:** cleaned up the old source code in the following screens: DWR, Project, IAB, Planning Periods and Asset Groups.
3. **Issue:** Cost Adjustment screen: when switching Source Type between Project and Asset Group, it inserted into the pop-up screen the previous Detailed Asset, which was not in the pick list.  
**Status:** This issue is resolved.
4. **Issue:** DWR Extracts: an error would occur when running the Extracts with the "For All Resource Groups" box checked.  
**Status:** This issue is resolved.

#### 3.1 build 18

1. **Issue:** Yearend Forecast screen: when created a new Yearend Forecast from approved budget, or updated actual quantities for an existing Yearend Forecast, and having a Cost Adjustment record, the YTD values, Forecast Cost, Funded Cost and Forecast AWQ, on the forecast grid were wrong.  
**Status:** This issue is resolved.
2. **Issue:** DWR Performance Extracts: in some situations, the Costs, Quantities, etc were blank for Cost Adjustment records that do not contain any Detailed Assets or had Detailed Assets with 0 quantities.  
**Status:** This issue is resolved.

3. **Modification:** Cost Adjustment screen: made the Apply button always enabled.

### 3.1 build 17

1. **Issue:** The Funded IWR value for the DWR Performance Extract is not calculated correctly.  
**Status:** This issue is resolved.
2. **Issue:** Yearend Forecast screen: cannot enter more than five digits in the Workload Balance grid.  
**Status:** This issue is resolved.
3. **Issue:** Yearend Forecast screen: the Forecast AWQ, Forecast Cost, Funded Cost, and Target Cost values are not populated correctly when the record is from existing or new project, not from the Interactive Budget or Yearend Forecast.  
**Status:** This issue is resolved.
4. **Issue:** Yearend Forecast screen: the Graph – Available People shows the value of 8 when the Workload Balance tab is showing for the first time. It should show the value of zero.  
**Status:** This issue is resolved.
5. **Modification:** Yearend Forecast screen: improved performance on creating the new Yearend Forecast data and loading the screen.
6. **Modification:** Yearend Forecast screen: changed to update the Asset Qty value for Quantity based AWQ Type to the existing value from the non-Quantity based AWQ Type with the same Asset Group and Asset Feature.
7. **Issue:** Interactive Budget screen: the Graph – Available People shows the value of 8 when the Workload Balance tab is displayed the first time. It should show the value of zero until the user goes to a record.  
**Status:** This issue is resolved.
8. **Modification:** Interactive Budget screen: changed to update the Asset Qty value for Quantity based AWQ Type to the existing value from the non-Quantity based AWQ Type with the same Asset Group and Asset Feature.
9. **Modification:** Interactive Budget screen: improved performance on creating the new Interactive Budget data and loading the screen.
10. **Modification:** For BMCC: modified “Handheld To DWR Import” utility to set the Equipment Hours from `dpractivites.tbldurationh` and `dpractivites.tbldurationm` if both `dprplantactivites.tblhours` and `dprplantactivites.tblminutes` values are zero.
11. **Modification:** For BMCC: modified “Handheld To DWR Import” utility to get the database names for WRR and MMS from the table `tblConnectionInfo` instead of from the file `Vemax.GlobalInfo.dat`.
12. **Modification:** Improved performance of the DWR extracts.



### 3.1 build 16

1. **Issue:** LWAG screen: when a Labour, Material, or Equipment record is deleted, the cost values in the Cost Data tab are not recalculated.  
**Status:** This issue is resolved.
2. **Issue:** DWR screen: the Source Code pick list does not always show the project number when the Source Type is Project.  
**Status:** This issue is resolved.

### 3.1 build 15

1. **Issue:** IAB screen: when budget was deleted or undeleted, all the columns on the grid for any budget were read only.  
**Status:** This issue is resolved.
2. **Issue:** Yearend Processing: when YEP is run again for the same fiscal year and resource group, the program was overwriting the consumable inventory data with existing sales and purchases and accumulating the start quantity.  
**Status:** This issue is resolved.
3. **Modification:** Main screen and Yearend Processing: removed the time portion from the dates processed in the YEP.
4. **Modification:** Improved performance of the DWR Extracts.
5. **Issue:** MMS DataTransfer utility is not importing the date/time values correctly. It converts the date/time values by using the local time zone. The date/time values should always stay the same regardless of the time zone.  
**Status:** This issue is resolved.

### 3.1 build 14

1. **Issue:** DWR "Delete Line" was deleting all the new unsaved lines.  
**Status:** This issue is resolved.
2. **Modification:** Added new setting "Update DWR Detailed Asset Costs".  
This setting determines if the DWR Detailed Asset Costs data should be updated when doing the DWR extracts or updating the DWR Costs data.
3. **Modification:** DWR and Cost Adjustment screens: improved performance of deleting the DWR and Line records.
4. **Modification:** DataView: "Material By Det Asset" changed the following:
  - Replaced "Crew Hours" with "Matrl Per Crew Hour"  
calculated as: Qty Used/Crew Hours
  - Replaced "Staff Hours" with "Matrl Per Staff Hour"  
calculated as: Qty Used/Staff Hours
  - Replaced "Work Done" with "Matrl Per Work Unit"  
calculated as: Qty Used/Work Done
5. **Modification:** DataView: "Consumable Inventory" (Flat View) added field called: "Has Det Asset" so users can filter the grid to show only DWR records that have Detailed Assets.

6. **Issue:** DataView: "Asset Group Details" is displaying the wrong value for the Work UoM.  
**Status:** This issue is resolved.
7. **New Feature:** Added DataView: "Project List" under the "RG Lists" group.

#### 3.1 build 13

1. **Issue:** GWAG and LWAG screen: when Surcharge in the System List was changed, Recalculate menu did not calculate activity cost accordingly.  
**Status:** This issue is resolved.
2. **Issue:** DWR: when the last line record of the existing DWR was deleted, and the data re-entered, the line record was disappeared when the Finish button was pressed.  
**Status:** This issue is resolved.
3. **Issue:** The DataView view "DWR Detailed Asset" is not showing the "Cost", "Staff Hours", "Crew Hours", and "Work Done" values correctly. It's the issue in the SQL view "vwDwrDetailedAsset".  
**Status:** This issue is resolved.
4. **Modification:** Added new setting "Update DWR Detailed Asset Costs". This setting determines if the DWR Detailed Asset Costs data should be updated when doing the DWR extracts or updating the DWR Costs data.

#### 3.1 build 12

1. **Issue:** Cost Adjustment screen: after Cost Adjustment was deleted, the line buttons did not display the correct line numbers. DWR and DWR Line records not always were deleted from tables.  
**Status:** This issue is resolved.
2. **Modification:** DWR Materials and Consumable Inventory screen: changed the display format for the unit cost from 2 to up to 4 and 6 decimals.
3. **Issue:** DWR screen: staff hours were not always recalculated for the records with detailed asset.  
**Status:** This issue is resolved.
4. **Issue:** IAB screen: when on an approved budget, the "Balance to Zero" menu was enabled.  
**Status:** This issue is resolved.

#### 3.1 build 11

1. **Modification:** Cost Adjustment screen: Improved validation of entered data.
2. **Modification:** DWR: DV Extracts screen: Improved performance.

#### 3.1 build 10

1. **New Feature:** Cost Adjustment screen: user will be able to add multiple DWR Line records to the Cost Adjustment record.

### 3.1 build 9

1. **Issue:** Custom DWR: Equipment Unit screen: data validation is run even for read-only users.  
**Status:** This issue is resolved.
2. **Issue:** Consumable Inventory screen: MTGS reported that the sales and purchases quantity was saved in the start quantity field.  
**Status:** This issue is resolved.

### 3.1 build 8

1. **Issue:** DWR screen: not able to save a record with Work Request as a source type.  
**Status:** This issue is resolved.

### 3.1 build 7

1. **Issue:** YEF screen: when YEF was approved and extracted the data, the performance view put the same funded amount to all the assets that are listed in the projects.  
**Status:** This issue is resolved.

### 3.1 build 6

1. **Issue:** Custom DWR: Equipment Unit screen: when all records are deleted on the navigator, the Equipment Unit Rates grid was not grayed out.  
**Status:** This issue is resolved.
2. **Issue:** DWR screen: when on a deleted record (in red color) and trying to create a new DWR record, the source type drop-down was disabled.  
**Status:** This issue is resolved.
3. **Issue:** DWR screen: when un-deleting a record, the software was able to create duplicated crew/date combination record.  
**Status:** This issue is resolved.
4. **Issue:** Project screen: Detailed Asset pop-up screens: when the Sort By menu was used, the grid column Quantity % became visible even though the setting "Show Condition State in YEF" was set to "No".  
**Status:** This issue is resolved.
5. **Issue:** Project screen: when project with detailed asset was deleted, was not able to delete the detailed asset.  
**Status:** This issue is resolved.
6. **Issue:** Project screen: when created a new project with the same name as a deleted one, the navigator was not showing the new one.  
**Status:** This issue is resolved.
7. **Modification:** Project screen: a few cosmetic changes.
8. **Issue:** YEF screen: error message when editing the Forecast grid.  
**Status:** This issue is resolved.

9. **Issue:** YEF screen: was not able to approve the YEF even though the work on both tabs was balanced.  
**Status:** This issue is resolved.
10. **New Feature:** A new Agency setting for MMS called “Filter DWR Detailed Asset List by Activity” has been added to the Custom Control Panel. The purpose of this setting is to turn off the filtering of the Detailed Asset pick-list by the Activity if needed. The default behavior is to have the Filter on (setting is set to Yes) for all agencies except SHT.

### 3.1 build 5

1. **Issue:** Work By Detailed Asset Extract: the Data Viewer doesn’t show the total values.  
**Status:** This issue is resolved.
2. **Issue:** IAB screen: when you defer work in the Budget grid, the required people in the Workload balance tab were not reduced accordingly.  
**Status:** This issue is resolved.
3. **Modification:** Added Condition State to the following MMS DataViews: **Work By Detail Asset, Material By Detail Asset, Detailed Assets.**
4. **New Feature:** A new Agency setting for MMS called “DWR Cost Percent Decimals” has been added to the Custom Control Panel (and WRR Control Panel). It defines the number of decimals for the DWR cost percent value.
5. **New Feature:** Cost Adjustment screen: added reading of the new agency setting called “DWR Cost Percent Decimals” for the display of the cost percentage.
6. **Issue:** DWR and Equipment pop-up screens: the total cost was not calculated properly.  
**Status:** This issue is resolved.
7. **Issue:** on many MMS and Custom DWR screens: the date and time were displayed instead of only the date.  
**Status:** This issue is resolved.
8. **Modification:** For BMCC: Modified “Handheld To DWR Import” utility to populate the new columns for DWR tables with appropriate values.
9. **Modification:** DWR: Material Consumed screen: changed the display format of Quantity In and Quantity Used to 3 decimals.
10. **Modification:** all pop-up screens: changed the font color on the grid and made the text more readable when in read-only mode.
11. **New Feature:** DWR and Custom DWR: A new Agency setting for MMS called “**Disable DWR for All Users**” has been added to the Custom Control Panel. It determines if the screens DWR and Custom DWR will be read-only for all users.
12. **Modification:** DWR and Custom DWR: improved performance when the screen is closed.

### 3.1 build 4

1. **New Feature:** Linked Detailed Assets screen: added an option to show records linked and unlinked for a selected Resource Group.
2. **Modification:** Linked Detailed Assets screen: enhanced the Cancel and grid filtering functions.
3. **Issue:** Custom DWR, DWR and Equipment Unit screens: issues saving records when records were showing date and time instead of just the date.  
**Status:** This issue is resolved.
4. **Modification:** Equipment Unit, Cost Adjustment and DWR screens: some cosmetic changes.
5. **Issue:** Detailed Asset and YEP: When you run Yearend Processing for a resource group, the detailed asset records for this resource group and fiscal year were deleted.  
**Status:** This issue is resolved.
6. **Enhancement:** Increased the allowable characters for the Code and Description fields for the Project, Resource Group and Asset Groups screens to 50 characters for the Code and 100 characters for the Description.

### 3.1 build 3

1. **Issue:** Cost Adjustment: incorrectly reported that the Detailed Asset is required when trying to save a record.  
**Status:** This issue is resolved.
2. **Issue:** Linked Detailed Assets screen showed a debugging window.  
**Status:** This issue is resolved.
3. **Issue:** Yearend Forecast: an error occurs when clicking on the Show/Hide columns button.  
**Status:** This issue is resolved.
4. **Issue:** Yearend Forecast: an error occurs when creating a new Yearend Forecast.  
**Status:** This issue is resolved.

### 3.1 build 2

1. **Modification:** Link Asset ID screen: Limited selection of the records to the selected asset type for the "Show All" option.
2. **Issue:** DWR: DV Extracts screen: the check box "For All Resource Groups" was disabled even though the settings were set to "Yes".  
**Status:** This issue is resolved.
3. **Issue:** DWR: DV Extracts screen: Condition State extract was listed more than once.  
**Status:** This issue is resolved.
4. **Modification:** DWR: Improved performance.

### 3.1 build 1

1. **New Feature:** Import Detailed Asset screen: added new field: Resource Group to the Import function.
2. **Modification:** Link Asset ID screen: displayed RG Code of the imported Detailed Asset on the Available Asset ID grid.

### 3.1 build 0

1. **Modification:** MMS: DWR and Cost Adjustment screens: changed the process of saving the results of Calculate the DWR Cost from DWR Cost table to DWR Line table.
2. **Modification:** Custom DWR: DWR and Cost Adjustment screens: changed the process of saving the results of Calculate the DWR Cost from DWR Cost table to DWR Line table.
3. **New Feature:** A new Agency setting for MMS called "Show Condition States in YEF" has been added to the Custom Control Panel (and WRR Control Panel). If you want to create Yearend Forecasts by Condition State and use the other new features regarding Condition States, you must to set this new setting to "Yes".  
Note in order to use the new Condition State features the new Condition State field in the Detailed Assets list must be populated and they must match exactly with the Service State labels in the GWAGs and LWAGs. If you plan on using this feature it is highly recommended that you wait until the start of a new fiscal year.
4. **New Feature:** Detailed Asset Import: added a new field to the screen and the process of importing called: "Condition State".
5. **New Feature:** Detailed Asset screen & Link Detailed Asset: added a new field to the screen called: "Condition State".
6. **New Feature:** YEF screen: added a new field to the screen and the process: "Condition State". This feature requires the new "Show Condition States in YEF" setting to be set to "Yes".
7. **New Feature:** DWR Extracts can be executed for all resource groups. New user-specific setting called "User can process Extracts for all RGs" has been added. Users who want to use this feature must have to set this setting set to "Yes".
8. **New Feature:** DWR Extracts added new DWR Performance by Condition State extract.
9. **New Feature:** DWR Extracts can now be automated by setting up an MS SQL Server Run Job to call a stored procedure.
10. **Modification:** Cost Adj., DWR & CustomDWR added Condition State to the Det Asset screen.
11. **Modification:** Project: added **Quantity %** & Condition State to the Detailed Asset screen.
12. **Issue:** Project screen: when clicked on 2nd next button, qry was in edit mode even a read only user.  
**Status:** This issue is resolved.

13. **Modification:** Project, DWR, CustomDWR and CostAdj.: made inserting DetAsset required if the new “Show Condition States in YEF” setting is “Yes”.
14. **Modification:** YEF: re-enabled the “For Scheduling” menu to the Approve Forecast menu (did not include copy all Forecast values).
15. **New Feature:** added DB Version to the About screen.
16. **Modification:** Equipment Unit screen: added a new field: Unit Description and showed the Order Number field.

#### v3.0 build 94

1. **Issue:** YEP: cannot run step 2 if some other resource groups have already completed step 2.  
**Status:** This issue is resolved.

#### v3.0 build 93

1. **Issue:** LWAG screen: MMS incorrectly reported that the required resources were not available when trying to copy an activity.  
**Status:** This issue is resolved.

#### v3.0 build 92

1. **Issue:** MMS: the main form’s caption did not always display the fiscal year label.  
**Status:** This issue is resolved.
2. **Modification:** Custom DWR: changed the main form’s caption and added the fiscal year label.
3. **Modification:** YEP: added the Equipment Unit Rate table to the process.
4. **Issue:** LWAG screen: MMS incorrectly reported that the required resources were not available when trying to copy an activity.  
**Status:** This issue is resolved.
5. **Issue:** GWAGs/LWAGs screen: there was a refresh issue of the resources drop down pick lists when logged in as System Configuration manager and switched between System and Local lists.  
**Status:** This issue is resolved.

#### v3.0 build 91

1. **Issue:** DWR: an error occurred when the date format changed and DWR Cost was recalculated.  
**Status:** This issue is resolved.
2. **Modification:** For BMCC: Modified “Handheld To DWR Import” utility to parse the equipment code and equipment unit from the “dprplant.tblplantcode” field value by the “-” separator.
3. **Issue:** IAB Report: Rpt6 (“Resource Distribution by Activity”) did not display records correctly.  
**Status:** This issue is resolved.

4. **Modification:** IAB Report: Rpt6 (“Resource Distribution by Activity”): minor cosmetic changes.
5. **Issue:** DV Extract: IAB Resource Requirements: the Usage Hrs Period, Poss Hrs Period and Cost Period values are not calculated correctly.  
**Status:** This issue is resolved.
6. **Issue:** DV Extract: IAB Resource Requirements: Data Viewer displayed duplicated AG Code values because of the spaces in the data.  
**Status:** This issue is resolved.
7. **Issue:** For SHT: DWR Viewer: Because of the changes to MMS users screen (multiple Resource Groups for a user), the user of DWR Viewer was not able to view all of the Resource Groups that he or she had access to.

#### v3.0 build 90

1. **Issue:** DWR and Custom DWR: Material Consumed screen: the Unit Cost column was not always read only.  
**Status:** This issue is resolved.
2. **Issue:** Custom DWR: Equipment screen: an error occurred when date format changed and equipment record was edited.  
**Status:** This issue is resolved.
3. **Modification:** For BMCC: Modified “Handheld To DWR Import” utility to import DWR data as Asset Group source type when the “dpractivities.tblassetgroup” field value is “Asset Group”.

#### v3.0 build 89

1. **Issue:** Custom DWR: Equipment Unit screen: an error occurred when trying to enter a new equipment unit record.  
**Status:** This issue is resolved.
2. **Modification:** For BMCC: Modified “Handheld To DWR Import” utility to import equipment data from the table “dprplant” if the table “dprplantactivities” doesn’t contain activity data for the equipment.

#### v3.0 build 87 / 88

1. **New Feature:** Custom DWR: Equipment Unit screen: added the multiple rates grid so that more than one set of rates can be entered for each equipment unit. This feature is very useful if the rates change within a fiscal year.
2. **Issue:** IAB screen: The View “By Detailed IWR” feature does not respect the settings in the “Editable Columns” screen.  
**Status:** This issue is resolved.
3. **Modification:** Budget report 6: “Resource Distribution by Activity” and report 2: “Annual Deferred Work List”: minor cosmetic changes.



v3.0 build 86

1. **Modification:** MMS users will now be added using the Custom Control Panel just like all our other software. The MMS UpdateDB utility will automatically update the Users list in the Custom Control Panel from the MMS User's list. Because of this change we removed the ability to add users in the Maintain Users screen however we added the ability to set multiple Resource Groups per user.
2. **Modification:** YEP: updated the YEP utility to reflect the changes of the MMS Users list and the new field Resource Group ID in the ResGroup table.
3. **Modification:** MMS DWR and Custom DWR: new feature: Import WRR data to MMS.
4. **Issue:** DWR Performance By Funding Source DVExtract: for one Resource Group the totals were calculating incorrectly.  
**Status:** This issue is resolved.
5. **Issue:** MMS DataTransfer is not exporting and importing RG data correctly.  
**Status:** This issue is resolved. MMS DataTransfer should be much more stable now.
6. **Modification:** Asset Group and Project screen: added and populated new field: Resource Group ID to accommodate the latest changes in MMS DataTransfer.
7. **Modification:** MMS now passes the Computer Name when calling DataView Enterprise. When DataView is called from MMS, it will now filter by Computer Name if the check box is checked in DV Designer.
8. **Issue:** Asset Type Code screen: General Activities and Asset ID Descriptions could be saved before the master Asset Type record was saved. Now the user must press the Apply button after entering the Asset Type Code and Description before selecting any Activities or entering any Asset ID Descriptions.  
**Status:** This issue is resolved.
9. **Modification:** For BMCC: Modified "Handheld To DWR Import" utility to import source data with empty WR numbers into DWR as Asset Group source type.
10. **Modification:** For BMCC: Modified "Handheld To DWR Import" utility to create new equipment unit record if it does not exist in MMS.
11. **Issue:** IAB and YEF: Activity Guide Line screen: Insert and Delete menu were enabled.  
**Status:** This issue is resolved.
12. **Modification:** IAB: "Change a Project Funding Source" screen and LWAG: "Add Document File" screen: minor cosmetic changes.

#### v3.0 build 85

1. **Issue:** YEF screen: when approving the YEF, the “YEF Out of Balance” log file may display wrong information.  
**Status:** This issue is resolved.
2. **Issue:** YEF screen: in certain situations when approving a forecast, the checking for out of balance may be incorrect. MMS may indicate that the forecast is out of balance when in fact it is balanced.  
**Status:** This issue is resolved.
3. **Issue:** YEF screen: Reg. People in Workload balance graph, may not be displayed correctly, due to refreshing issues.  
**Status:** This issue is resolved.
4. **Issue:** IAB screen: the number of the Available People was not calculated correctly when re-logging on as a different user.  
**Status:** This issue is resolved.

#### v3.0 build 84

1. **Issue:** Project screen: the total project cost was not displayed correctly due to refreshing issues.  
**Status:** This issue is resolved.
2. **Issue:** Project screen: when changing the asset group for the master project, the activities may be listed twice or incorrectly on the list box.  
**Status:** This issue is resolved.
3. **Issue:** YEF screen: the number of the Available People was not calculated correctly.  
**Status:** This issue is resolved.
4. **Issue:** YEF screen: Converting Workload Distribution Grid from Crew Days to AWQ was not working correctly.  
**Status:** This issue is resolved.

#### v3.0 build 83

1. **Issue:** Run Wag Report (Rpt41): LWAG Print select screen contains the WinUserName.  
**Status:** This issue is resolved.
2. **Issue:** Planning Periods screen: a BDE error appears when the user tries to open the Work Calendar screen.  
**Status:** This issue is resolved.
3. **Issue:** YEF screen: a debugging screen was appearing when approving a YEF. **Status:** This issue is resolved.

#### v3.0 build 82

1. **Issue:** YEP: when run the step 2 or 3, and logged in into the new (not the current) fiscal year and then canceled, the next fiscal year label was created.  
**Status:** This issue is resolved.
2. **Modification:** YEP: changed the validation procedure for the current fiscal year and the related text messages.

3. **Issue:** LWAG/GWAG screen: when inserting a new record in the Labour, Materials, or Equipment grid, the newly inserted record could not be deleted.  
**Status:** This issue is resolved.
4. **Issue:** Project screen: when changing the asset group for the sub-project, the activities may be listed twice on the list box.  
**Status:** This issue is resolved.
5. **Issue:** YEF Details Extract: An "Invalid Date" error message occurred when the Date format in the Windows Control Panel is changed.  
**Status:** This issue is resolved.

#### v3.0 build 81

1. **Issue:** IAB screen - Budget tab: Funding Source information was not displayed correctly for unfunded records.  
**Status:** This issue is resolved.
2. **Modification:** IAB screen - changed the internal sorting of some queries to display the correct Funding Source.  
**Note: Please confirm if the Funding Source column is correct in your budgets.**
3. **Issue:** Projects screen: when entering a sub-project and changing the Asset Group from the default, the Selected Activities list is not updated correctly. Activities from the original Asset Group may still be in the list.  
**Status:** This issue is resolved.

#### v3.0 build 80

1. **Issue:** DV Extracts: DWR Performance and DWR Performance by Funding Source: fields: UOM, Fiscal Year and Work Program Code were not populated.  
**Status:** This issue is resolved.  
**Note: Please re-run these extracts for all Resource Groups.**
2. **Issue:** DV Extracts: DWR Performance by Funding Source: fields: Activity Code and Activity Description were not populated.  
**Status:** This issue is resolved.
3. **Issue:** Maintain Users screen: displays error message when trying to add a new user and System ID length is not 6 digits.  
**Status:** This issue is resolved.
4. **Modification:** Maintain Users and Maintain Database Installations screens: enhanced the sorting and locate function in the grid to go to the next record after deleting.
5. **Modification:** LWAGS/GWAGS screens: enhanced locate function in the grid to go to the next record after deleting.
6. **Modification:** Consumable Inventory screen: enhanced the error checking to make sure the check mark indicating Sales/Purchases and the Total Sales/Purchases are correct. A message will be displayed if the Total Sales/Purchases are not correct. The message will also ask the user to verify that the Start Quantity is still correct because MMS cannot determine what the Start Quantity should be.

7. **Modification:** MMS splash screen: added information about Windows User Name and Computer Name to the Details section.
8. **Issue:** YEF screen - Forecast: edited record in the grid was not refreshed.  
**Status:** This issue is resolved.
9. **Issue:** YEF screen - Work Load Balance graph: required people was not calculated correctly.  
**Status:** This issue is resolved.
10. **Modification:** YEF temp tables: populated System ID field.
11. **Issue:** YEP: did not insert New Fiscal Year into the YEP Status table when run for the first time.  
**Status:** This issue is resolved.
12. **Issue:** DWR & Custom DWR - Detailed Asset: record disappears when being on this DWR record and going into Cost Adjustment's record with Detailed Asset.  
**Status:** This issue is resolved.
13. **Issue:** Projects, DWR & Custom DWR - cannot save the record occasionally if the data in certain fields is too long. Error: "Statement has been terminated. String or binary data would be truncated."  
**Status:** This issue is resolved.
14. **Issue:** The Sales and Purchases data in the Consumable Inventory screen is not included in DataTransfer.  
**Status:** This issue is resolved.

v3.0 build 79

1. **Issue:** YEF: Forecast and Work Load Balance grids did not show the headers on every page when printed.  
**Status:** This issue is resolved.
2. **Issue:** IAB: Funding Source Priorities screen is not read only when budget is approved or read only, and Available Funding Source screen is not read only when budget is approved.  
**Status:** This issue is resolved.
3. **Modification:** Cosmetic changes e.g.: to the control's size.
4. **Issue:** DV Extracts - DWR Performance and DWR Performance by Funding Source: The YTD Cost and YTD Work Done for projects are not showing up in the data viewer.  
**Status:** This issue is resolved.
5. **Issue:** DWR: when switched the Source Type (e.g.: from Asset Group to Project), the Detailed Asset was not displayed correctly.  
**Status:** This issue is resolved.

6. **Modification:** Custom DWR: When DWR is based on a project having more than one activity and Detailed Asset attached to some of them, then when the activity with Detailed Asset is selected from the drop down, the Detailed Asset will show up on the Detailed Asset screen (same as MMS).
7. **Modification:** added Poss UoM and Util Usage UoM to the IAB Resources DataView. Removed the old IAB Resource Requirements DataView because it was incorrect.
8. **Modification:** added Quantity Remaining and Value Remaining to the Consumable Inventory Flat DataView.
9. **New Feature:** added the following reports:
  - Rpt40 - Activity Progress Report By Asset Group
  - Rpt40\_1 - Activity Progress Report By Project
  - Rpt40\_2 - Activity Progress Report By Work Program
10. **Modification:** added new fields to the Rpt40 table:
  - Rpt40 ID
  - Computer Name
  - WinUserName
  - FiscalYear ID
11. **Modification:** added Fiscal Year ID field to the following tables:
  - IAB\_Resources
  - YEF\_Resources
  - YEF\_DV\_Extract
  - YEF\_WorkQtyDist
  - MatlByDetAsset
  - WkByDetAsset
  - DWRPerformance
  - DWRPerfByFundingSourceAdded Fiscal Year field to the table: YEF\_DV\_Extract  
Added fields: Project ID, Resource list ID to the tables:
  - IAB\_Resources
  - YEF\_Resources
12. **Issue:** YEF: The Navigator's planning periods labels were not sorted.  
**Status:** This issue is resolved.
13. **Issue:** Funding Sources: There are duplicated activities listed for the same Asset Group.  
**Status:** This issue is resolved.
14. **Modification:** Added Fiscal Year ID to all of the queries for the DV Extract tables.  
**Please re-run all extracts for all Resource Groups.**

v3.0 build 78

1. **Issue:** MMS DWR and Custom DWR: The DWR cost is not re-calculated correctly for the new DWR records.  
**Status:** This issue is resolved.

2. **Issue:** IAB: The changes to the percentages in the Global Rate Adjustments screen are not saved.  
**Status:** This issue is resolved.
3. **Modification:** DWR Labour Summary DataView: removed Labour Code field so there would not be any duplicated records.
4. **New Feature:** added “DWR Labour Details” DataView.
5. **Issue:** DWR and Custom DWR: Activities may appear twice in the drop down.  
**Status:** This issue is resolved.
6. **Modification:** Custom DWR: Enabled Data Viewer toolbar button to open the Data Viewer Enterprise without requiring the login.
7. **New Feature:** Added IAB reports:
  - Rpt2 - Annual Deferred Work List
  - Rpt6 - Resource Distribution By Activity
  - Rpt7 - Workload Distribution Report Summary

#### v3.0 build 77

1. **Modification:** Link Asset ID screen: added a confirmation message when trying to bring across all of the records.
2. **Modification:** Improved validation when deleting an Interactive Budget and Yearend Forecast to make sure the record on the screen is in sync with the navigator.
3. **Issue:** IAB: Balance To Zero menu is not disabled when on a deleted budget.  
**Status:** This issue is resolved.
4. **Modification:** Enabled Data Viewer toolbar button to open the Data Viewer Enterprise without requiring the login.
5. **Issue:** IAB: the data in the temp tables may not be cleaned up properly, with a Local DataView on a server farm (in a multi-Server environment) when the automatically load-balancing across more than one server occurs.  
**Status:** This issue is resolved.
6. **Issue:** DWR Reports: when the Date format in the Windows Control Panel is changed, the Start & End Dates were not set to the selected DWR record date.  
Reports:
  - Rpt62 - Equipment PM/Repair Report
  - Rpt55 - SHT CoDES Data Entry
  - Rpt55CE - SHT CoDES Data Entry**Status:** This issue is resolved.
7. **Modification:** DWR and Custom DWR: improved performance and reduced locking issues by optimizing various queries.

8. **Issue:** DWR & Custom DWR - Detailed Asset: record disappears when being on this DWR record, a new record is created in Cost Adjustment screen.  
**Status:** This issue is resolved.
9. **Issue:** reported by SHT: Custom DWR activities may appear twice in the drop down.  
**Status:** We could not repeat this issue however we modified the query and may have solved the issue.
10. **Modification:** DWR and Custom DWR: increased the number of items that can be displayed in the pick-lists without scrolling.
11. **Issue:** DWR and Custom DWR: when changing the Source Type (Src Type) in the drop down, the Detailed Asset (for the previous Source Type) on the pop up screen was not deleted.  
**Status:** This issue is resolved.
12. **New Feature:** added "DWR Labour Summary" DataView.
13. **Modification:** Disabled Cost Adjustment menu when the Navigator is disabled because it was deleting the Detailed Asset records in DWR and Project screens. Now the user must save or cancel the new created record before opening the Cost Adjustments screen.
14. **Issue:** Project - Detailed Asset records for the selected project may disappear when a new project is created.  
**Status:** This issue is resolved.
15. **Issue:** Project Screen: when creating a new project, without saving it first, after the Re-calculate cost button is pressed, project would not be saved.  
**Status:** This issue is resolved. If the project is not saved and the user pressed the Re-calculate cost button, MMS will ask the user if he or she wants to save the project first. If the user clicks on the "No" button then the re-calculate is cancelled.
16. **Issue:** Projects Screen: when deleting a Master Project after fully deleting all sub-projects, a message would display saying that the Master Project could not be deleted because it was still linked to the sub-projects.  
**Status:** This issue is resolved. Now the navigator is fully refreshed after deleting so there are no issues with "phantom" records.
17. **Modification:** corrected and enhanced many DataViews.
18. **Issue:** The GWAG description was not populated correctly with multiple fiscal years of data for the following DataViewer Extracts:
  - DWR Material Consumed by Detailed Asset
  - DWR Performance
  - DWR Performance by Funding Source
  - Work by Detailed Asset
  - YEF Work Qty Distribution
  - YEF Details**Status:** This issue is resolved.  
**Note: Make sure to run the listed Extracts for each Resource Group.**

v3.0 build 76

1. **Issue:** when logged into Windows 2003 as a normal user, cannot log into MMS or Custom DWR because the splash screen could not load the image.  
**Status:** This issue is resolved.

v3.0 build 75

1. **Modification:** Consumable Inventory and Sales/Purchases: Improved the data validation and queries.
2. **Issue:** reported by **Manitoba Highways:** Consumable Inventory - Sales/Purchases screen:
  - the check mark may not be saved
  - the Total Purchases or Total Sales may not be saved
  - the Sales or Purchases records may or may not be saved
  - the records may disappear after the user closes MMS then re-opens it again**Status:** This issue is resolved.
3. **Issue:** The Primary Key generation was not using the System ID value from the System.dat file.  
**Note: this change affects ALL screens and utilities.**  
**Status:** This issue is resolved.
4. **Modification:** Added better error checking when getting the System ID.  
**Note: this change affects ALL screens and utilities.**
5. **Modification:** Upgraded to the latest data-connection components that are used internally in the MMS applications to help correct some of the issues with saving data in the Consumable Inventory screen as well as other screens.  
**Note: this change affects ALL screens and utilities.**

v3.0 build 74

1. **Issue:** When deleting a record in any of the main screens, the prior record in the navigator is not being located.  
**Status:** This issue is resolved.
2. **Issue:** YEF screen: the menus are not disabled when selecting a different RG.  
**Status:** This issue is resolved.
3. **Issue:** IAB & YEF screens: Re-logon menu is not disabled when Cancel menu is enabled.  
**Status:** This issue is resolved.
4. **Issue:** Projects & Funding Source & Asset Type Code screens: not able to cancel the record when Re-logon is executed.  
**Status:** This issue is resolved.
5. **Issue:** Cannot delete Asset Type record.  
**Status:** This issue is resolved.
6. **Issue:** Link Asset ID: cannot unlink a new created Asset ID record.  
**Status:** This issue is resolved.



7. **Modification:** Link Asset ID: displayed message when cannot unlink Asset ID, because it is linked to other records.
8. **Issue:** Link Asset ID: RG drop down does not filter all records.  
**Status:** This issue is resolved.
9. **Issue:** An “Invalid Date” error message occurred in the following reports when the Date format in the Windows Control Panel is changed.  
Reports:
  - Rpt62 - Equipment PM/Repair Report
  - Rpt55 - SHT CoDES Data Entry
  - Rpt55CE - SHT CoDES Data Entry**Status:** This issue is resolved.

#### v3.0 build 73

1. **Issue:** IAB: deleting budget causes budget data for the different RG to be deleted.  
**Status:** This issue is resolved.
2. **Issue:** Cannot read the user settings path from the global info file.  
**Status:** This issue is resolved.
3. **Modification:** YEP: added RG filter to speed up the processing (step 2 & 3).
4. **Issue:** YEF: “Rename Forecast” menu is not disabled when reading data of a different RG.  
**Status:** This issue is resolved.
5. **Issue:** IAB: the grid is not refreshed when reading data of a different RG.  
**Status:** This issue is resolved.
6. **Issue:** Consumable Inventory: the navigator is not refreshed after a record was saved.  
**Status:** This issue is resolved.
7. **Issue:** DWR - Detailed Asset: when deleting all records, the message and function checking for none zero records is not line number specific.  
**Status:** This issue is resolved.
8. **Issue:** YEF & IAB: error message when reading data of a different RG and displaying the Activity Guide Line.  
**Status:** This issue is resolved.
9. **Modification:** Filtered the following screens by RG:  
IAB, YEF, Asset Groups, Projects & Funding Source.
10. **Issue:** Sales/Purchases screen: the Insert button is not disabled when reading data of a different RG.  
**Status:** This issue is resolved.
11. **Issue:** DWR - PM Checks: error message when deleting a record.  
**Status:** This issue is resolved.

12. **Issue:** IAB: error message when recalculating budget (division by zero).  
**Status:** This issue is resolved.
13. **Issue:** IAB - Available Funding Source screen: controls are not disabled when reading data of a different RG.  
**Status:** This issue is resolved.

v3.0 build 72

1. **Modification:** Changed the field widths in the main and temp databases for the following fields. Please note that the reports have not been adjusted to accommodate the increased size because there is not enough space on the page. As a result, some text may be cut off, so please enter only the text that is needed and check to make sure it will fit on the reports.
  - Resource Code to 50
  - Resource Description to 100
  - Consumable Inventory Code to 50
  - Consumable Inventory Description to 100
  - Unit Number to 50
  - Charge Code to 50
  - Charge Description to 100
2. **Issue:** Resource Groups - Properties screen: the drop downs display the date and time for the Standard Crew Day instead of only the time.  
**Status:** This issue is resolved.
3. **Issue:** DWR - Detailed Asset screen: when being on one line and deleting all records, it deletes all records for all of the lines.  
**Status:** This issue is resolved.
4. **Issue:** Asset Type Code screen: while being on deleted record (the first time) and trying to create a new one, the screen's controls are not enabled.  
**Status:** This issue is resolved.
5. **New Feature:** Update LWAGS code when GWAGS code is changed.
6. **Modification:** DWR: improved performance to speed up the "Calculate DWR Costs".
7. **Issue:** Custom DWR: PM Checks, Detailed Asset & Material screens: can not delete the record entered as the last one.  
**Status:** This issue is resolved.
8. **Issue:** Projects & Cost Adjustment - Detailed Asset screens: can not cancel and delete the record entered as the last one.  
**Status:** This issue is resolved.
9. **Issue:** YEP: Data Transfer did not transfer the right records.  
**Status:** This issue is resolved.
10. **Modification:** LWAG/GWAG: added the ability to duplicate the code for Labour/Equipment/Materials.

11. **New Feature:** added function to improve the Delete Records from Temp tables procedure.

#### v3.0 build 71

1. **Issue:** YEP (v3.0 build 8): when copying projects to the new year, even though the activities, charge code, etc. were not selected to copy. In the Paradox version of YEP, it will not copy projects if they have no supporting data.  
**Status:** This issue is resolved.
2. **Modification:** LWAGS screen: changed the save procedure while deleting the resources: Labour/Equipment/Materials (forced to press the save button - same as the Paradox version).
3. **Modification:** LWAGS screen: improved the Refresh procedure to speed up changing the tabs of the page control.
4. **Issue:** Custom DWR (v3.0 build 57): error message when editing the Crew Size.  
**Status:** This issue is resolved.
5. **Issue:** YEF screen: form's controls are disabled when Re-logon.  
**Status:** This issue is resolved.
6. **Issue:** YEF screen: issue with loading records when Re-logon into a different fiscal year.  
**Status:** This issue is resolved.
7. **Modification:** Link Asset ID screen: filtered Delete Unlinked by Asset Type.

#### v3.0 build 70

1. **Issue:** YEP (v3.0 build 7): not able to run step1 on a new database.  
**Status:** This issue is resolved.

#### v3.0 build 69

1. **Issue:** with deleting the IAB for the second time.  
**Status:** This issue is resolved.

#### v3.0 build 68

1. **Issue:** Custom DWR (v3.0 build 56) - PM Checks screen: error message when trying to delete record.  
**Status:** This issue is resolved.
2. **Issue:** DWR & Custom DWR (v3.0 build 56): Detailed Asset records are duplicated when changing lines.  
**Status:** This issue is resolved.
3. **Modification:** Import Detailed Assets: added Asset Type ID to the Import function (v3.0 build 15).  
**Status:** This issue is resolved.
4. **Modification:** Linked Asset ID screen: added filter by Asset Type ID.

#### v3.0 build 67

1. **Issue:** Link Asset ID screen: issue with filtering data.  
**Status:** This issue is resolved.
2. **Issue:** with duplicated numbers in IAB calculations.  
**Status:** This issue is resolved.
3. **Issue:** error message when creating new IAB and YEP.  
**Status:** This issue is resolved.

#### v3.0 build 66

1. **Issue:** YEP (v3.0 build 5): not able to run step1 for multiple fiscal years.  
**Status:** This issue is resolved.
2. **Issue:** LWAGS: it is not saving changes to the Unit Cost in CostData tab.  
**Status:** This issue is resolved.

#### v3.0 build 65

1. **Issue:** DWRViewer: it is printing multiple duplications of report 55CE.  
**Status:** This issue is resolved.

#### v3.0 build 64

1. **Issue:** YEP: not able to run step1 for multiple fiscal years.  
**Status:** This issue is resolved.
2. **Issue:** YEP (v3.0 build 4): not able to determine which step was last run.  
**Status:** This issue is resolved.
3. **Modification:** Reports: 55 & 55CE: changed the groups order (groups 1 & 2).
4. **Modification:** DWRViewer: changed the font color & functionality of the button "Refresh".
5. **Issue:** with duplication of stockpile numbers in reports: 55 & 55CE  
**Status:** This issue is resolved.

#### v3.0 build 63

1. **Modification:** DWRViewer for SHT: Replaced "All Crews" radio button with "All resources Groups for" radio button, replaced "Crew" drop down with "RG" drop down, and changed the filters accordingly.

#### v3.0 build 62

1. **Issue:** with entering Asset Type Codes in System Lists on a new database.  
**Status:** This issue is resolved.
2. **Issue:** with entering Asset Types in Asset Groups on a new database.  
**Status:** This issue is resolved.
3. **Modification:** DWRViewer (v1.0 build 27) for SHT: changed the behaviour of the Start Date in the Filter options as requested by Lorne.