

## Release Notes for DataViewer Enterprise

### v2.0 build 03

1. **Upgrade:** The Fast Report controls have been upgraded to the latest version.
2. **Enhancement:** Added the support to draw up to 4 chart panels on a single sheet.

### v2.0 build 02

1. **Enhancement:** If a user has a chart setup then the DataView is changed in DV Designer, the chart may not work so a more descriptive message is now displayed.

When the chart screen is shown and it doesn't draw the chart because a field is missing, the following message will be displayed:

"Your chart will not display do you want to correct it?"

If the fields in the chart have changed since it was created, you may need to re-select the appropriate fields or remove the sheet that is affected.

Or if the chart was created in one view type (e.g. Flat) and copied to the other view type (e.g. Master/Detail) the fields may be different so you would need to make the appropriate adjustments."

2. **New Feature:** When the Refresh is pressed or F5 is pressed in DV Enterprise, refresh the Config List and the Side Bar.
3. **Major New Feature:** DataViewer now supports multiple Detail Levels of data in the Master/Detail Grid and the Form Report. This is needed in the Form Reports when you want to display sub-reports of multiple sources of data. A perfect example of this is the DWR data in MMS where you may want to display Detailed Assets, Labour, Equipment, and Materials for each DWR Line. Each of these details would be available in the Form Reports and would appear as separate tabs in the Master/Detail grid.
4. **New Feature:** Added the "Copy to Master/Detail View" button to the Chart Setup screen for copying the chart sheet(s) from the Flat view to the Master/Detail view. This button is only visible when the current grid view is the Flat view.
5. **New Feature:** Added the "Copy to Flat View" button to the Chart Setup screen for copying the chart sheet(s) from the Master/Detail view to the Flat view. This button is only visible when the current grid view is the Master/Detail view.
6. **Enhancement:** Include the Main Grid Filter text to the Data Summary Grid print preview screen.

7. **Problem:** When a pivot grid is saved as a User layout then saved as an Agency layout the Pivot Grid setup is lost.  
**Status:** This problem is resolved.
8. **Problem:** When a field with the check box “Visible In Grid” is not checked in DV Designer, the DV Enterprise always loads the grid with that field hidden regardless if the column is visible when the layout is saved. It should only load such a field as hidden for new layouts.  
**Status:** This problem is resolved.
9. **Problem:** The Data Summary grid settings are lost when switched to card view.  
**Status:** This problem is resolved.
10. **Problem:** The Save Data Summary As feature doesn't include the column filters and conditional formatting information.  
**Status:** This problem is resolved.
11. **Problem:** The Advanced Filter dialog shows blank field names even though the field names were correctly selected and saved.  
**Status:** This problem is resolved.
12. **Problem:** An error occurs when the user trying to save the new layout name containing an apostrophe.  
**Status:** This problem is resolved.
13. **Problem:** The saved layout name is not displayed properly in the saved layout dropdown list when the layout name contains an ampersand “&”.  
**Status:** This problem is resolved.
14. **Problem:** DV Enterprise always loads the layout with the grouped column sorted in ascending order even though the layout was saved with the grouped column sorted as descending.  
**Status:** This problem is resolved.

#### v2.0 build 01

1. **New Feature:** Added the Conditional Formatting and Display Format features to the Master grid.
2. **New Feature:** Add a Grid Option called “Re-order columns from DV Designer” to set the order of all the columns in this grid to be the same as in DataViewer Designer.
3. **New Feature:** Added the multiple chart sheets feature to the Chart. Each chart sheet contains an individual chart with a single or multiple series. The available chart sheets can be viewed by pressing one of the sheet icons on the chart tool bar.

4. **Modification:** The chart regions are no longer supported. All existing charts containing chart regions have been converted to chart sheets.
5. **Modification:** Added a second row to the chart tool bar and moved the entire chart tools onto it. Users can press the “Chart Tools” button to show or hide the “Chart Tools” on the second row of the chart tool bar. Also the “Reset 3D” button has been moved to the “Chart Options” dropdown on the “Chart Tools” tool bar.
6. **Enhancement:** Users can now drag the chart title, legend, or page # to anywhere within the chart area. To reset these chart items back to the default positions, press the “Reset Chart Title Position”, “Reset Legend Position”, or “Reset Page # Position” menu in the “Chart Options” dropdown on the “Chart Tools” tool bar.
7. **Enhancement:** Added the form layout in addition to the grid for the series info and sheet info to the Chart Setup screen. The form layout makes it easier to modify the properties than using the grid.
8. **Enhancement:** Show the Maximize button on the Move Columns dialog box.
9. **Enhancement:** Increased the default height of the Move Columns dialog box so less scrolling is needed.
10. **Problem:** The Export to SQL feature in the grid tool bar does not properly export the columns with the float data type.  
**Status:** This problem is resolved.
11. **Problem:** The Master/Detail grids are not loaded properly when the Detail view record was created before the Master view.  
**Status:** This problem is resolved.
12. **Problem:** F5 refresh should re-load whatever View Type the user is currently on instead of the default layout.  
**Status:** This problem is resolved.
13. **Problem:** When the “Show In Preview” check box in DV Designer is checked after a layout is saved that field does not appear in the Preview Columns pick list.  
**Status:** This problem is resolved.
14. **Problem:** When clicking on the Restore Side Bar menu, the currently selected DataView is no longer selected.  
**Status:** This problem is resolved.
15. **Problem:** After changing a selection in the DataView Selection screen the currently selected DataView is no longer selected.  
**Status:** This problem is resolved.

16. **Problem:** When exporting a DataView to SQL, all of the Float fields are stored as VarChar(50) in the destination table.

**Status:** This problem is resolved.

17. **Problem:** The Advanced Filter does not return the correct result set when the filter is fiscal year specific.

**Status:** This problem is resolved.

18. **Problem:** Fields with "Visible In Grid" setting set to No are not displayed in saved layouts.

**Status:** This problem is resolved.

19. **Problem:** An error "Invalid column name..." occurs when a chart series contains a Series and Grid filter and the user filters the grid on a calculated column.

**Status:** This problem is resolved.

#### v2.0 build 00

1. **New Feature:** Added the "Select Preview Form Report" dialog for the user to select which Form Report to load instead of just loading the default one.

2. **Enhancement:** Improved performance on loading the DataView containing Progress Meter columns.

3. **Problem:** Pressing the F5 function key does not refresh the Config pick list.  
**Status:** This problem is resolved.

4. **Problem:** Saving the chart layout for the Flat view should not overwrite what's in the Master/Detail view and vice versa.

**Status:** This problem is resolved.

5. **Problem:** The Pivot Grid Print Preview screen shows the Advanced Filter text from the default layout even though the current layout does not have the Advanced Filter selected.

**Status:** This problem is resolved.

#### v1.9 build 13

1. **New Feature:** Added the "Themes" menu item to the menu bar. There are twenty themes that provide stunning modern-looking interfaces. Each theme determines the overall painting scheme for the controls on the screen and specifies how a control's headers, scrollbars, borders, buttons and other visual elements are painted. There is also a sub-menu under the "Themes" menu called "Use Default Side Bar". This feature set the side bar to display the way it always has in the past in case you don't like how a new theme displays the side bar.

2. **New Feature:** Added four buttons to the chart tool bar labeled: "R1", "R2", "R3", "R4" to turn on each of the regions in a chart. Down for visible; Up for not

visible. These buttons are only enabled if a series exists for those regions.

3. **Problem:** An error “Invalid column name ‘Month’ ” occurs when the Chart and Grid are visible and the user tries to filter the column that has the # sign as part of the column name.  
**Status:** This problem is resolved.
4. **Problem:** An error “Invalid column name ‘ComputerName’ ” occurs when the user tries to use the Data Summary and the table tblTempPercentile is missing the ComputerName field.  
**Status:** This problem is resolved.
5. **Problem:** An error “Incorrect syntax near TempTable”” occurs when the user tries to create the Data Summary that contains both percentile and calculated fields.  
**Status:** This problem is resolved.

#### v1.9 build 12

1. **Enhancement:** Replaced the old Form reporting tool with the new one called “Fast Report”. This new Form reporting tool supports sub-reports and it loads the report much faster than the old one. Existing Form reports are not compatible with the new Form reporting tool so the old one is still available for existing reports only. All new Form reports will use the new Fast Report. We encourage all users to recreate their existing Form reports because the old reporting tool will be discontinued some time in the future.

#### v1.9 build 11

1. **Enhancement:** In the Chart Setup, automatically set the X and Y axis labels of a chart from the Field Alias used.
2. **Enhancement:** In the Chart Setup, set the Title of a chart to the first Series Name by default. If the Chart Title is blank when the Layout is saved the Title is set to name of the Saved Layout.

#### v1.9 build 10

1. **New Feature:** Added the “Copy To” button to the Conditional Formatting dialog for copying the formatting from one field to another.
2. **Enhancement:** Changed the Value 1 and 2 boxes to pick-lists for string fields in the Conditional Formatting dialog. The pick-list is empty until the ellipse button is pressed to refresh the pick-list items.
3. **New Feature:** Added the “Move Columns” button to the standard tool bar that displays a popup check list listing all the column names in the grid and allow the user to move the columns up and down in the list. The check box is to set the visible property of the column

4. **Enhancement:** Added hints to the Saved Layouts, Advanced Filter, Data Summary, etc to show the current selection so the user can quickly see what layout and Advanced Filter they are on. Plus the Status Bar also shows the Current Layout and Current Advanced Filter.
5. **Problem:** The Pivot Grid column headers do not display the correct values when the Group Interval is set as DateMonth, DateDayOfWeek, etc.  
**Status:** This problem is resolved.

#### v1.9 build 9

1. **Problem:** An error occurred when loading the view with progress meter editor and the max value for the progress meter containing decimals.  
**Status:** This problem is resolved.
2. **Enhancement:** Added the “Include Null Values” check box to the Data Summary dialog allowing the user to summarize the data by including the null values for the numeric fields.

#### v1.9 build 8

1. **Enhancement:** The splitter position between the Grid and Chart is saved for each user.
2. **Enhancement:** If the chart has only one page, then page navigation buttons will be hidden: < << >> >.
3. **New Feature:** In the chart tool bar, added a button with three dropdown menu items to filter the chart data: Filter By Chart Setup, Filter By Visible Data, and Show All Data. The Filter By Chart Setup is selected by default, which means the data loaded for the chart is based on the “Data to Chart” column value in the Chart Setup screen. Filter By Visible Data filters the chart to whatever data is in the grid regardless of what is set in the Chart Setup.
4. **New Feature:** In the chart tool bar, added a button to show/hide the “Page 1 of 1” label on the chart (pressed is shown, un-pressed is hidden).
5. **New Feature:** In the chart tool bar, added a button to automatically set the points per page so the chart fills the screen when the chart has only one page.
6. **New Feature:** Added the ability for users to set the display format for the columns. The new item “(Display Format)” is displayed from the Column Filter drop-down in the column header.

#### v1.9 build 7

1. **Problem:** The fields on the “Pivot Grid Setup” dialog are duplicated when it’s first loaded from the saved layout and both view types flat and master/detail are

setup for the current data view.

**Status:** This problem is resolved.

2. **Problem:** The pivot grid data is not refreshed when the OK button is pressed from the “Pivot Grid Setup” dialog.

**Status:** This problem is resolved.

3. **Problem:** The selected Advanced Filter is not saved with the pivot grid layout when the Advanced Filter was originally copied from the “Copy Main Grid Advanced Filters” menu.

**Status:** This problem is resolved.

#### v1.9 build 6

1. **Problem:** The fields on the “Pivot Grid Setup” dialog disappears when the user cancels saving the new layout from the “Save Pivot Grid Layout” dialog.

**Status:** This problem is resolved.

2. **Problem:** The Pivot Grid Layout is always saved as default even the Default check box on “Save Pivot Grid Layout” dialog is unchecked.

**Status:** This problem is resolved.

3. **Problem:** The existing Advanced Filter is not saved properly.

**Status:** This problem is resolved.

4. **New Feature:** Added the “New Pivot Grid Setup” icon on the Pivot Grid tool bar allowing the user to create new Pivot Grid Setup.

#### v1.9 build 5

1. **New Feature:** Added “File\Import Layouts” and “File\Export Layouts” menu items which allow the user to import or export the user/agency layouts. Note: the user must have edit rights to import agency layouts.

#### v1.9 build 4

1. **New Feature:** Added “Conditional Formatting” button to the Pivot Grid Setup dialog for setting up the conditional formatting for the “Data Area” field(s).

2. **New Feature:** Added “Copy Main Grid Advanced Filters” menu item to the Pivot Grid’s Advanced Filter menu for copying the advanced filters from the main grid.

3. **Problem:** The column width property value for the Pivot Grid is lost the Pivot Grid Setup dialog is closed.

**Status:** This problem is resolved.

4. **Problem:** The Chart Series Names are drawn in reverse order in the Chart Legend when the multiple chart regions are used.

**Status:** This problem is resolved.

5. **Problem:** The Chart is out of sync with the grid when the Auto Row Filter is used and pressing the Show/Hide Chart button to show or hide the chart.  
**Status:** This problem is resolved.
6. **Modification:** Changed the Chart Setup dialog to set the default value for the Operation as “Sum” if the Value Axis is numeric data type, else set as “Count”.

#### v1.9 build 3

1. **New Feature:** Added the “Series & Grid Filter” pick list item to the “Data to Chart” column on the Chart Setup screen. This new feature allows the user to specify the series filter and grid filter combined for the source data to chart.
2. **New Feature:** Added the Region column to the Chart Setup screen allowing the user to specify the chart region to draw the series on. There are four chart regions counting from the bottom up. This enables the user to have up to four separate charts on the same screen at the same time.
3. **New Feature:** Added the “Open in Excel” menu item to the grid’s export menu. This feature exports the active grid to a temporary file and then opens this file in Microsoft® Excel®.
4. **New Feature:** Added an item to the File menu called “Restore Side Bar” that will clear the saved side bar and reload the items in the same order as in DV Designer.
5. **Enhancement:** Changed the Refresh (F5) to reload the current layout that the user is on (not the default layout). However, clicking on the DataView in the Side Bar will still reload the default layout.
6. **Enhancement:** Changed the “Add Field” button on the Pivot Grid Setup screen to “Add Fields”, which opens the “Add Fields” dialog allowing the user to add multiple fields and assign the fields to appropriate grid area.
7. **Problem:** The chart was loaded after pressing OK in the Chart Setup screen even though the “Load Data for Chart” box was unchecked. The chart should never load (on the main screen or in the Chart Setup) if this box is unchecked. With the exception that if the user presses the Redraw button then the chart will load in the Chart Setup screen only and not on the main screen (regardless if the “Load Data for Chart” box is checked or not).  
**Status:** This problem is resolved.
8. **Problem:** When checking the “Load Data for Chart” box the modified items in the Chart Setup are lost.  
**Status:** This problem is resolved.
9. **Problem:** Advanced Filter field pick list excluded ID fields.

- Status:** This problem is resolved.
10. **Problem:** Side bar items do not appear in the same order as in DV Designer (seem to be reverse order). The DataView Selection screen causes this problem.  
**Status:** This problem is resolved.
  11. **Problem:** Charting is only supported for Master and Flat Levels, however the Detail Level fields were displayed in the Chart Setup screen.  
**Status:** This problem is resolved.
  12. **Enhancement:** Improved loading of the detail records in a Master/Detail view when the Master level has an Advanced Filter is set.

v1.9 build 2

1. **New Feature:** Added the Pivot Grid feature to represent data from an underlying data source in a cross-tabulated form. It calculates summaries and summary totals against specific fields and displays the summary values within data cells. The following summary functions are supported: Sum, Average, Count, Min, Max, StdDev, StdDevp, StdVar, StdVarp.

v1.9 build 1

1. **Problem:** The column stops totaling if the field name is changed.  
**Status:** This problem is resolved.
2. **Problem:** The Conditional Formatting dialog causes error “Object reference not set to an instance of an object” when the Font property is expanded.  
**Status:** This problem is resolved.
3. **Problem:** The column that is assigned with the MemoExEdit editor does not display the text properly in the master-detail view.  
**Status:** This problem is resolved.
4. **Problem:** The column filters for the Detail grid in the master-detail view is not saved when the Grid Layout is saved.  
**Status:** This problem is resolved.
5. **Problem:** The column that is assigned with the DateTime data type displays repeated date value in the Data Summary view.  
**Status:** This problem is resolved.
6. **Problem:** The column that is assigned with the PickImage editor does not display the image in the master-detail view.  
**Status:** This problem is resolved.
7. **Problem:** The column that is assigned with the Progress Max Value editor or Progress Tolerance editor does not display the gradient colors correctly.

- Status:** This problem is resolved.
8. **Problem:** Switching between flat view and master-detail view causes the chart to be lost.  
**Status:** This problem is resolved.
  9. **Problem:** The error “Unable to cast object of type ‘System.Data.DataViewManagerListItemTypeDescriptor’ to type ‘System.Data.DataRowView’” occurs when trying to save the master-detail view grid layout.  
**Status:** This problem is resolved.
  10. **Problem:** The chart does not filter the data based on the grid when the Data To Chart is set to Visible Data, and at the same time also causing the Show Zero Values check box not functioning.  
**Status:** This problem is resolved.
  11. **Problem:** When the Data to Chart is set to Visible Data the Show Zero Values check box does not work.  
**Status:** This problem is resolved.
  12. **Problem:** The chart’s export button does not work for new chart setup.  
**Status:** This problem is resolved.

#### v1.9 build 0

1. **Upgrade:** The third party controls (such as the grid, the side bar, chart, etc) have been upgraded to the latest version.

#### v1.8 build 4

1. **New Feature:** Added new Editor “Open File” which combines the text display with an ellipsis button. When the button is pressed, the program uses the Windows association to open the file.

#### v1.8 build 3

1. **Problem:** The View Types sub-menu items for master-detail views are disabled.  
**Status:** This problem is resolved.
2. **Problem:** The Data Summary view does not format the Date data type column correctly. It duplicates the date value.  
**Status:** This problem is resolved.
3. **Problem:** The Data Summary view allows editing on all columns. All columns should be read only.  
**Status:** This problem is resolved.
4. **Problem:** The Data list box on the Advanced Filter dialog does not show the

vertical scroll bar when there are many items in the list box.

**Status:** This problem is resolved.

5. **Problem:** The chart is drawn as blank if the user selects a different layout without the chart set up and then selects back to the same layout.

**Status:** This problem is resolved.

6. **Modification:** Added confirmation messages to the following menu items:

- a. Remove Field Values
- b. Remove Data Summary
- c. Remove Advanced Filter
- d. Remove SQL View

#### v1.8 build 2

1. **Problem:** The chart control causes an error “System.OutOfMemoryException” when the saved layout contains many chart series.

**Status:** This problem is resolved.

2. **Problem:** The saved layout cannot be loaded when it contains Advanced Filter using “Fiscal Year” as filter criteria.

**Status:** This problem is resolved.

#### v1.8 build 1

1. **New Feature:** Added the “Export to SQL” feature to the grid export menu.

#### v1.8 build 0

1. **Upgrade:** The third party controls (such as the grid, the side bar, chart, etc) have been upgraded to the latest version.

2. **Enhancement:** The Progress Meter editor now supports displaying decimals.

3. **Modification:** Moved all the sub-menu items from the “Grid Options” menu to the “View Type” menu.

4. **New Feature:** Added the “Allow Cell Merging” and “Show Auto Filter Row” sub-menu items to the “Grid Options” menu.

5. **New Feature:** Added the “Conditional Formatting” feature to the grid column dropdown.

6. **Enhancement:** The changes made from the Chart Editor are now saved with the layout.

7. **Problem:** The chart layout is not saved when the current DataView layout is saved.

**Status:** This problem is resolved.

8. **Problem:** The chart does not draw multiple bar series properly when the bar series containing zero Y-axis values.

**Status:** This problem is resolved.

#### v1.7 build 1

1. **Modification:** Changed the MemoExEdit column to show a lower case “a” icon when the grid cell contains no text.
2. **Problem:** DataViewer Enterprise causes the error message saying, “The database does not exist” when the DataView is selected and the SQL Server Name for the database connection is the IP address or different from the DataViewer Enterprise’s SQL Server Name.  
**Status:** This problem is resolved.

#### v1.7 build 0

1. **Upgrade:** DataViewer Enterprise has been upgraded to support version 2 of the Microsoft .NET Framework.  
The [iBOSToolsPrerequisites\\_2\\_0.exe](#) install is needed for this version of DataViewer Enterprise.
2. **Upgrade:** The third party controls (such as the grid, the side bar, chart, etc) have been upgraded to the latest version.
3. **Modification:** The Form Layout settings are now stored by User ID instead of Computer/Windows User ID combination. i.e. the settings are only specific to the user, not the computer that the user is running the software from.
4. **Modification:** Changed to check the “Use Grid Filter” check box as default for the Form Report.
5. **Problem:** The column with MemoExEdit editor does not display the rich text correctly. It should not show the rich text formatting characters.  
**Status:** This problem is resolved.

#### v1.6 build 12

1. **Problem:** The group summary footer may show the value from a wrong column when the saved grid layout is loaded.  
**Status:** This problem is resolved.

#### v1.6 build 11

1. **Problem:** When the “Load Data for Grid” or “Load Data for Chart” check box is clicked and it is checked it causes the active DataView’s group item not showing as selected.  
**Status:** This problem is resolved.

2. **Problem:** When the user clicks on different DataView and cancels saving the layout for the current DataView, it stays on the current DataView but it shows the other DataView as the selected DataView.  
**Status:** This problem is resolved.
3. **Problem:** When the user picks a different configuration name from the “Config” dropdown list, it does not show a confirmation message to save the layout if the current layout is changed.  
**Status:** This problem is resolved.
4. **Problem:** If a DataView contains a column using a Progress Meter as the editor the memory used by DataViewer increases and is not released.  
**Status:** This problem is resolved.
5. **Enhancement:** Improved performance when loading DataViews.
6. **New Feature:** Added feature to export the DataView grid to Text or XML file.

#### v1.6 build 10

1. **Problem:** When the Chart Setup data has been modified and the user opens the Advanced Filter dialog, the changes for the Chart Setup data may be lost.  
**Status:** This problem is resolved.

#### v1.6 build 9

1. **Problem:** The splash screen sometimes reappears and stays on top of other windows when loading the DataViewer Enterprise from the MMS application.  
**Status:** This problem is resolved.

#### v1.6 build 8

1. **Problem:** When the selected layout is the default layout and the user selects the “Save Layout As” drop down item from the “Saved Layouts” menu, if the new name does not change any charts will be lost.  
**Status:** This problem is resolved.
2. **Enhancement:** Field Values now supports fields with the data types integer, float or date.
3. **Enhancement:** The Conf pick-list control is now larger so that longer configuration names are not cut off.
4. **Problem:** In the “Data View Selection” dialog, DataViews are occasionally shown in the available list more than once.  
**Status:** This problem is resolved

5. **Enhancement:** If the current Data Summary is an Agency Data Summary then, when the user clicks “Save Data Summary as” menu item the dialog will show the “Owner” fields as “Agency” instead of “User”.

The same change has been made to “Field Values” and “Advanced Filter”.

#### v1.6 build 7

1. **Problem:** In the charting, if there is a series that uses the line function when the user closes the chart setup screen, or when the user loads a saved layout that uses a line function chart, an error may occur.

**Status:** This problem is resolved.

#### v1.6 build 6

1. **Enhancement:** In the remove and edit dialogs for the Advanced Filter, Data Summary, and Field Values, the first item in the dropdown list is now selected automatically.

2. **Problem:** In the Advanced Filter, if all of the lines in the dialog are unchecked, the unselected filter lines will be lost the next time the Advanced Filter dialog is opened.

**Status:** This problem is resolved.

3. **Problem:** In the Advanced Filter, if the user selects “Edit” from the Advanced Filter menu to edit the current Advanced Filter (instead of clicking the Advanced Filter button) when the Advanced Filter dialog is closed the modified Advanced Filter does not get applied to the grid (the old Advanced Filter is still applied to the grid). The same problem exists with Data Summary and Field Values.

**Status:** This problem is resolved.

4. **Problem:** In the Chart, when the user selects “Save Layout As” from the Saved Layouts menu to save the current layout with a different name, the chart and its settings are not saved to the new layout.

**Status:** This problem is resolved.

5. **Problem:** In the Field Values, when the user selects “Clear Current Field Values” from the Field Values menu, the current Field Values is cleared but the Field Values menu is still bold indicating Field Values are applied.

**Status:** This problem is resolved.

6. **Problem:** In the Field Values, if Field Values are saved using a name that is already used, a message will display asking to overwrite the existing Field Values. If the “No” button is clicked, then another dialog is opened to allow a different Field Values name to be entered. At this point if the user clicks the “Cancel” button DataViewer Enterprise will overwrite the existing Field Values.

- Status:** This problem is resolved.
7. **Problem:** If a DataView does not have any Field Info records an error message is displayed asking the user to contact their Configuration Manager to fix this problem. But after this message another error message is displayed (this is unnecessary).  
**Status:** This problem is resolved.
  8. **Problem:** In the Field Values, if no Field Values name is applied to the grid (no Field Values are checked in the menu) and the user clicks the Field Values button, or selects “New” from the Field Values menu, to create a new Field Values, a dialog is displayed asking to enter a name for the new Field Values. If the user clicks the Cancel button to close the dialog an error may occur.  
**Status:** This problem is resolved.
  9. **Problem:** In the Field Values, if the Field Values button is clicked to modify the applied Field Values a dialog opens to allow the modification. If no changes are made, and either the OK or Cancel button is clicked, the dialog will close. But when the user attempts to leave this DataView a message will be displayed asking to save the changes even though no changes have been made.  
**Status:** This problem is resolved.
  10. **Problem:** In the chart setup screen, if data type of the field used for “Category Axis (X)” is string and values of this field contain “” then when DataView draws the chart an error would occur.  
**Status:** This problem is resolved.
  11. **Modification:** In the chart setup screen, if data type of the field used for Value Axis (Y) is string then in the Operation column only “Count” is available. So other operations like “Min” and “Max” are removed from the drop down list.
  12. **Problem:** In the Data Summary dialog screen, some times the check box Show Count All Rows isn’t set properly for the loaded Data Summary.  
**Status:** This problem is resolved.
  13. **Problem:** When the user loads a saved Data Summary, the Column filter and Count don’t work properly.  
**Status:** This problem is resolved.
  14. **Modification:** When the user selects a different Advanced Filter, DataView Enterprise will no longer ask if she/he wants to save the layout changes because the changes do not need to be saved at that time.
  15. **Problem:** When the user saves the current Advanced Filter to another name then deletes a different saved Advanced Filter, the new Advanced Filter may be deleted instead.

- Status:** This problem is resolved.
16. **Problem:** When the user edits a saved Advanced Filter that is different than the current applied filter, the edited Advanced Filter may not be saved properly.  
**Status:** This problem is resolved.
17. **Problem:** If the user changed the applied Advanced Filter and the user does not save the changes then edits another saved Advanced Filter, the changes will be lost.  
**Status:** This problem is resolved
18. **Modification:** In the input name dialog for the Save and Save As features when the user changes the Owner value DataViewer Enterprise no longer changes the Default check box.
19. **Problem:** If the user edits a saved Data Summary and closes the dialog, the Data Summary will be displayed in the grid even though the user did not select that Data Summary for viewing.  
**Status:** This problem is resolved.
20. **Problem:** Form Report: when the user changes “Use Grid Filter” checkbox, DataViewer Enterprise disables the “Show Grid” and “Show Chart” buttons and causes the selected DataView in the sidebar to be un-bolded. The same problem when exists when the user clicks F5 to refresh (if the Form Report is displayed).  
**Status:** This problem is resolved.
21. **Enhancement:** In the screen to show Grid SQL Statement, added Comments at the beginning to show Configuration, Group etc. information.
22. **Problem:** If the DataView SQL statement has a sub-query in which there is “TOP \*\*\* PERCENT” and “Order By” clauses, SQL Server 2005 will ignore the “Order By” clause.  
**Status:** This problem is resolved by automatically replacing the “percent” with 1000000000.
23. **Problem:** If the user removes the current saved layout, and it is set as an agency or default layout, and then the user makes some changes to the grid and clicks the “Save” menu item or “Saved Layouts” menu DataViewer Enterprise does not save the changes.  
**Status:** This problem is resolved.
24. **Problem:** When the user clicks the “Save As” menu item in the “SQL Views” menu, DataViewer Enterprise will create a SQL view using the current DataView’s SQL statement. If an error occurs, the software will display the error message twice.  
**Status:** This problem is resolved.

25. **Problem:** In the Data Summary dialog, there is a problem with the COUNT operation returning an incorrect count when the field value is null.  
**Status:** This problem is resolved
26. **New Feature:** In the Advanced Filter dialog, the dialog now has a "Cancel Loading" button in the "Results" tab when the "Load Data" button is clicked; this allows the user to cancel the loading process.
27. **New Feature:** In the Advanced Filter dialog, the dialog now has a "Cancel" button in the "Data" tab for the "Value" column dropdown in the "Filter" tab when the "Load" button is clicked; this allows the user to cancel the loading process.
28. **Modification:** When DataViewer Enterprise is drawing a chart it will check if the number of records returned for the chart is over the maximum records set in designer or in the GlobalInfo file. If the number of records returned is greater than the setting, a message will inform the user that the chart cannot load. If the maximum records are set to zero or blank then DataViewer Enterprise will ignore the setting and draw the chart.
29. **Problem:** When DataViewer Enterprise is loading data for the grid it fails to check if the number of records returned for the grid is over the maximum records set in DataViewer Designer or in the GlobalInfo file.  
**Status:** This problem is resolved.
30. **Problem:** In the charting, if a saved layout that includes a chart is loaded the buttons in the chart toolbar may not work correctly. When some buttons are clicked an error may occur.  
**Status:** This problem is resolved.

#### v1.6 build 5

1. **Problem:** If the user selects "Re-login" from the "Options" menu and then logs in using the same username and password, some settings may be changed.  
**Status:** This problem is resolved.
2. **Problem:** In the chart setup screen, when the user first opens the screen and creates a new series and the data type of Value-Axis (Y) is string, then the first time the user clicks the Operation button, the drop down list shows five Operation types (there should only be three Operation types).  
**Status:** This problem is resolved.
3. **Problem:** In the chart setup screen, if there is a saved chart layout sometimes when the user opens the Chart Setup screen an error will occur.  
**Status:** This problem is resolved.

4. **New Feature:** Field Values menu.
  - a. Added “Save Field Values As” menu item to so the user can save the current checked Field Value as a new name.
  - b. Enriched the function for “Edit” menu item, when the user clicks it, a dialog will open to let the user choose a saved Field Values to edit from a drop down list.
5. **New Feature:** Data Summary menu.
  - a. Added “New” menu item to allow the user to crate a new Data Summary.
  - b. Added “Edit” menu item, when the user selects it, a dialog screen will open to let the user choose a saved Data Summary from a drop down list. The Data Summary screen will then load with the selected Data Summary. (Previously, the user had to check the saved Data Summary to make it active and then click the Data Summary menu to open the Data Summary screen).
6. **New Feature:** Advanced Filter menu.
  - a. Added “New” menu item to allow the user to crate a new Advanced Filter.
  - b. Added “Edit” menu item, when the user selects it, a dialog screen will open to let the user to choose a saved Advanced Filter from a drop down list. The Advanced Filter screen will then load with the selected Advanced Filter (Previously user had to check the Advanced Filter to make it active and then click the Advanced Filter menu to open the Advanced Filter screen).
7. **Problem:** If a Form Report is displayed F5 does not refresh the configuration properly.  
**Status:** This problem is resolved.
8. **Modification:** The Field Values screen has been enhanced to improve the running speed when the user clicks “Auto Create Field Values” and “Ok” buttons or when switching between records in the Field Grid.
9. **New Feature:** In the Advanced Filter dialog, the dialog shows the Advanced Filter name on the screen title. If it is a brand new Advanced Filter (does not have a name), the dialog screen does not have a screen title.
10. **New Feature:** In the Data Summary dialog, the dialog shows the Data Summary name on the screen title. If it is a brand new Data Summary (does not have a name), the dialog screen does not have a screen title.
11. **New Feature:** In the Grid, added “SQL Views” menu and two menu items. Authorized users can use these menu items to save the current SQL statement

used to populate the grid to the database (as a SQL View) or remove saved SQL Views. This feature is particularly useful for PPT users who need to filter existing DataViews and save them as SQL Views so PPT can load that data accordingly. Note: the setting: “User Can Create SQL Views” must be set to “Yes” for the user(s) who need this functionality. By default, this setting is set to “No” for all users.

12. **New Feature:** In the main form, added a new menu item “Grid SQL Statement” to the “View” menu. When it is clicked, a dialog will be open to show the SQL statement(s) used to populate the grid.
13. **Problem:** In Advanced Filter dialog, if the user selects values from the tab “Replaceable Text” (for example: “[Blank]” or “[Empty]”) as the field value, an error may occur.  
**Status:** This problem is resolved.
14. **Problem:** In the Data Summary, if you create a new Data Summary that does not use layout filters and save it as an agency Data Summary the next time the Data Summary is loaded it uses the layout filters.  
**Status:** This problem is resolved.
15. **Problem:** Charts occasionally may not load properly.  
**Status:** This problem is resolved.
16. **Modification:** Made minor cosmetic changes.

#### v1.6 build 4

1. **Modification:** When a DataView is opened, DataView Enterprise will try to open a saved default layout first. If a saved default layout cannot be found, then DataView will look for a saved Factory Default layout. If a Factory Default layout cannot be found, then it will open the DataView based on its DataView Designer settings.
2. **Problem:** If DataView Enterprise is on the DataView Form Report window and the user clicks F5 to refresh, DataView Enterprise switches to the current Grid View window instead of staying on the current Form Report.  
**Status:** This problem is resolved.
3. **Modification:** When the user clicks F5 to refresh the screen, DataView Enterprise refreshes the current DataView and repopulates the current configuration as well.
4. **Problem:** The print preview window shows the columns in the preview panel in light grey. It should show them in the colour blue.  
**Status:** This problem is resolved.

5. **Problem:** For the Advanced Filter, if the currently selected Advanced Filter is also used for the Chart and the Advanced Filter is changed, the Chart is not refreshed properly.  
**Status:** This problem is resolved.
6. **Problem:** In the Chart Setup window, if a series uses “Series Filter” for “Data to Chart” and no filter name is selected, when the “Redraw” button is clicked to draw the chart an error may occur.  
**Status:** This problem is resolved.
7. **Problem:** For the Advanced Filter, if the currently selected Advanced Filter is changed and it is unchecked in the list there is no message to asking if you want to save the changes. That results in all the changes being lost.  
**Status:** This problem is resolved.
8. **Modification:** DataViewer Enterprise supports “Filter by Windows User Name” to filter data. It no longer supports “Filter by Computer Name”.
9. **Problem:** If the user sets a master/detail grid layout as the Default (Agency) it will still always load the flat grid layout as the default.  
**Status:** This problem is resolved.
10. **Problem:** If a master/detail grid layout is saved with an advanced filter when you try to reload the layout an error may occur.  
**Status:** This problem is resolved.
11. **Problem:** If an Advanced filter set on a grid-grid layout and then the layout is switched to a flat grid the advanced filter is no longer set, but the button is still bold indicating it is set.  
**Status:** This problem is resolved.
12. **Modification:** Changed the detail grid to the same colour scheme as the master grid.
13. **New Feature:** Both the master grid and the detail grid can set the fixed columns like the flat grid.
14. **New Feature:** In Maser/Detail grid layouts, changes to the detail grid are now saved with the layout.
15. **Problem:** When viewing a Form Report, if you hit F5 to refresh the application it does not refresh the configuration properly.  
**Status:** This problem is resolved.
16. **Problem:** In the Field Values window, when using a mater /detail grid layout an error may occur when the “Auto Create Field Values” button is clicked.

- Status:** This problem is resolved.
17. **Problem:** In the Chart Setup screen, the “Filter Name” lookup should not show any items if there is no series using advanced filter as the data source.  
**Status:** This problem is resolved.
  18. **Modification:** For the Advanced Filter, once a new Advanced Filter is created and applied the Advance Filter menu font is changed to bold to indicate an Advanced Filter has been applied to the data.
  19. **Problem:** In the Field Values screen, if the “Edit” value is changed between “My settings’ to “Agency” an error may occur.  
**Status:** This problem is resolved.
  20. **Problem:** In the Field Values screen, sometimes the “Personalize” button does not work properly.  
**Status:** This problem is resolved.
  21. **Modification:** In the Field Values screen, when the user clicks the “Personalize” button, a dialog is opened to let the user choose agency Field Values to copy from. The dialog title is changed from “Remove Item” to “Personalize Field Values”.
  22. **New Feature:** In the Field Values screen, for each Field record, DataViewer Enterprise software will check if there are available agency Field Values to personalize and the decides if enable or disable the Personalize button.
  23. **Problem:** For Advanced Filter, when you have more than one saved Advanced Filter and you switch between the two filters it will ask you if you want to save the layout. If you click the cancel button the switching of the filters does not occur, but the checkmark in the Advanced Filter list has moved to the other filter (the applied filter is no longer in sync with the item shown as selected in the list). The same problem occurs for saved Data Summaries and saved Layouts.  
**Status:** This problem is resolved.
  24. **New Feature:** In the main form, added “Charting Manual” item to the help menu.
  25. **Problem:** In the main form, if a saved user layout is “saved as” an agency layout using the same name, the application asks if the user wants to overwrite the existing layout. If the user answers yes it creates a new layout with the same name instead of overwriting. The Field Values has the same problem.  
**Status:** This problem is resolved.
  26. **Modification:** Made minor cosmetic changes.

1. **Problem:** Charting: for charting series that show visible data in the Chart, the series are not refreshed properly when the user checks/unchecks the current column filters checkbox.  
**Status:** This problem is resolved.
2. **Problem:** On the main form, if the user clicks the Cancel button on the Remove Saved Layout dialog, DataViewer Enterprise does not go back to the previous screen. It loads the default saved layout and the changed layout is lost.  
**Status:** This problem is resolved.
3. **Problem:** On the main form, sometimes after the user opens and closes the Remove Saved Layout dialog and then attempts to save the changed layout using an existing layout name, DataViewer Enterprise asks if you want to overwrite the existing saved layout (which is correct functionality). But when you answer 'Yes' an error occurs saying DataViewer cannot save the layout using a blank name.  
**Status:** This problem is resolved.
4. **Problem:** On the main form, when the user opens a DataView and makes some changes on the layout and the clicks Show Form Report button, a message dialog shows up to ask if the user wants to save the changed layout.  
**Status:** This problem is resolved.
5. **Problem:** For the Form Report, when the "Use Grid Filter" checkbox is checked/unchecked the default Form Report loads. It should stay on the selected Form Report.  
**Status:** This problem is resolved.
6. **Problem:** For the Form Report, the "Use Grid Filter" checkbox can become out of sync with the Form Report. Sometimes it says it is filtered but it is not (and vice versa).  
**Status:** This problem is resolved.
7. **Problem:** On the main grid, if a DataView has both flat and master/detail layouts setup when the user switches from the flat grid view to the card view, an error may occur.  
**Status:** This problem is resolved.
8. **Modification:** For master/detail views, the relation tab on details view has been removed.
9. **New Feature:** For flat card views, the Customize button has been added.
10. **Modification:** For the Form Report screen, removed the Print Direct button from the tool bar.

11. **Problem:** For the Form Report, if the grid is in Flat Card or Card view, DataViewer Enterprise cannot load the Form Report properly.  
**Status:** This problem is resolved.
12. **Modification:** For the grid, removed the Print Direct button from the grid print preview screen.
13. **Problem:** For the Form Report, if the Form Report uses the grid filter, it may not refresh properly when the user checks/unchecks the current column filters checkbox on the grid.  
**Status:** This problem is resolved.
14. **Problem:** On the main grid, if the column filters checkbox is unchecked and the layout is saved, the next time the saved layout is opened the column filter is checked.  
**Status:** This problem is resolved.

#### v1.6 build 2

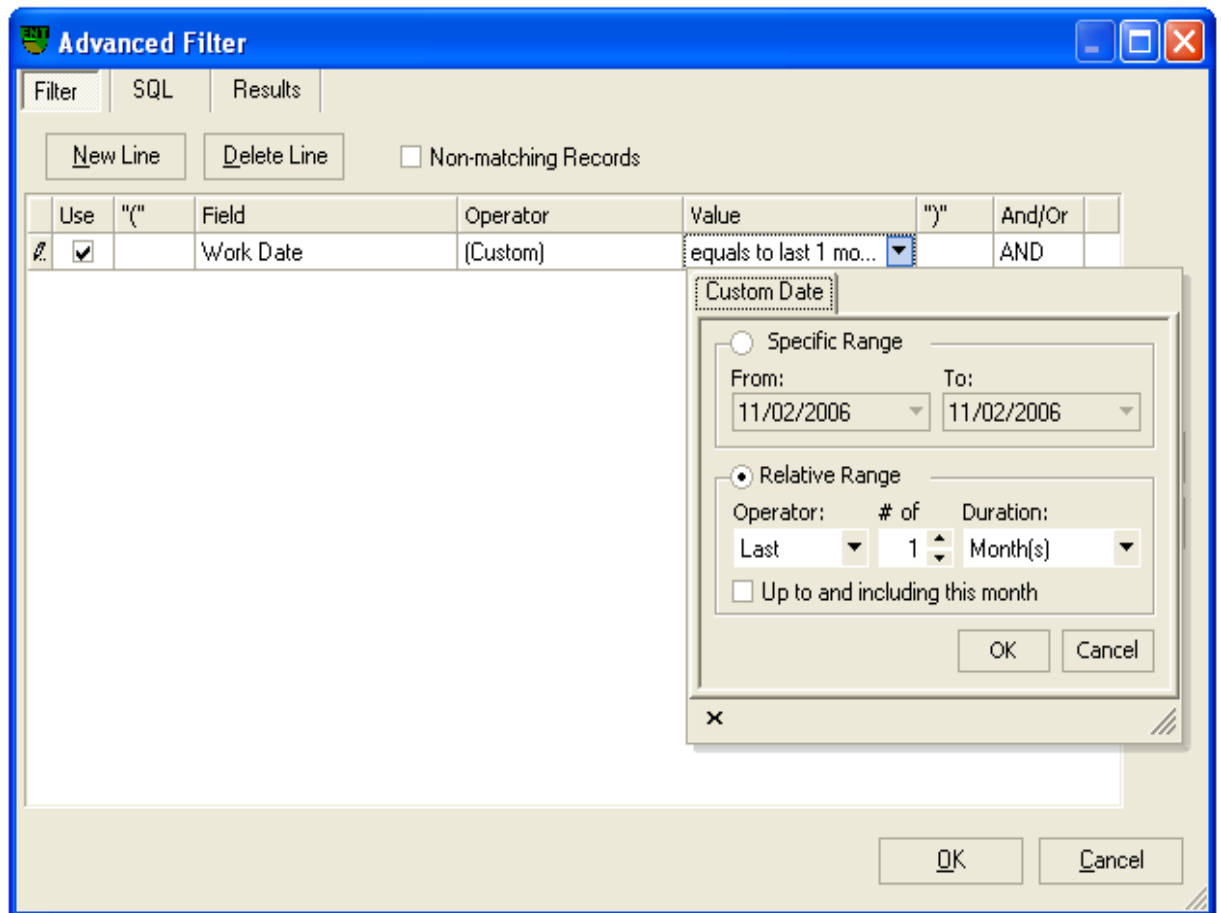
1. **Problem:** When you first open DataViewer Enterprise and the “Load Data for Grid” checkbox is changed an error may occur.  
**Status:** This problem is resolved.
2. **Problem:** If DataViewer Enterprise fails to populate a DataView an error message will show up. After that message, if the user clicks buttons on the main form an error may occur.  
**Status:** This problem is resolved.
3. **Modification:** Made minor cosmetic changes.

#### v1.6 build 1

1. **Problem:** The grid doesn't show data properly if its column editor is MemoExEdit.  
**Status:** This problem is resolved for standard text, but for rich text data type some more work needs to be done.
2. **Problem:** When populate the grid, if the SQL statement has invalid columns and DataViewer Enterprise tries to remove the invalid columns an error would occur.  
**Status:** This problem is resolved.
3. **Problem:** If the DataView doesn't have correct database connection settings, an error would occur.  
**Status:** This problem is resolved.
4. **Modification:** For the “Saved Layout” menu on the main form, click the “Restore Factory Defaults” will populate the DataView layout based on DataViewer Designer basic settings.

5. **Modification:** Changed the grid filter button look back to what it was before.
6. **New Feature:** The Release Notes menu will now show the PDF version of the release notes file if Adobe Reader is installed. If Adobe Reader is not installed, the release notes will be displayed as they have in previous versions.
7. **New Feature:** The Advanced Filter now supports including the current day, week, month, and year as an option in the Relative date Range. This means that if a user selects “Last” “2” “Months” and the “Up to and including this month” check box is selected then the filter will return all the records for the current month and the last 2 months (inclusive). If the “Up to and including this month” check box is not selected then the filter will only return the records for the last 2 months (but not including the current month).

Note: the Fiscal Year(s) option does not support the inclusive option at this time. This will be supported in future version but for now if a user selects Last 2 Fiscal Years, the filter will only return the data from 2 Fiscal Years ago (but only 1 Fiscal Year at a time). Also, the word “Previous” has been changed to “Last” to better reflect what the filter will include. See the screen print below.



#### v1.6 build 0

1. **New Feature:** Updated DevExpress controls to the latest version.
2. **New Feature:** A new button at the bottom right side of the grid called “Edit Filter” has been added so the users to create and modify column filters in a hierarchy display instead of in the column header. This feature gives the users more options for creating column filters.
3. **Modification:** DataView Enterprise no longer writes any information to files on the local hard drive.
4. **Modification:** Made some changes to make DataView Enterprise use memory more effectively.
5. **Modification:** Made minor cosmetic changes.

#### v1.5 build 8

1. **Problem:** For Advanced Filter, sometimes the Advanced Filter button is bolded but there is no Advanced Filter checked or the saved Advanced Filter is empty.  
**Status:** This problem is resolved.
2. **Problem:** When a DataView has failed to load, if the user clicks any button or menu item on the main form then an error would occur.  
**Status:** This problem is resolved.
3. **Modification:** DataView Enterprise no longer uses the “DVEnterprise DB Name” setting in the “Vemax.GlobalInfo.dat” file.
4. **Problem:** After the DataView is opened, if the user changes the status of “Load Data for Grid” check box, the program doesn’t respect the recent change when it loads a saved layout or sets a different Advanced Filter or Data Summary. The same problem exists with the chart to the “Load Data for Chart” check box.  
**Status:** This problem is resolved.
5. **Problem:** On the main form, the user opens a layout and doesn’t make any changes on the layout. But if he or she removes a saved layout from the drop down list and then tries to leave the current DataView or clicks F5 to refresh the current DataView, a message dialog shows that the layout has changed and asks if the user wants to save it.  
**Status:** This problem is resolved.
6. **Problem:** If the DataView Designer Enterprise Manager doesn’t create a DataView properly, DataView Enterprise will show some error messages more than once when the user tries to open the DataView.

**Status:** This problem is resolved

7. **Problem:** For Data Summary, if the user loads a Data Summary that is different in view type than the current view layout (for example: the current view layout is flat grid but the saved Data Summary is flat card), an error would occur.

**Status:** This problem is resolved

8. **Modification:** Made minor cosmetic changes.

v1.5 build 7

1. **Problem:** If the “editor” field in DataViewer Designer is set as a “Progress Meter” but the Progress Meter properties are not set properly, an error would occur.

**Status:** This problem is resolved.

2. **Problem:** For the grid, the DateTime Field isn't shown properly.

**Status:** This problem is resolved.

3. **Problem:** For the grid with an Advanced Filter selected, if the user opens the current Advanced Filter dialog and un-checks all filter lines (so that there is no advanced filter set at all) and then closes the dialog, the previous advanced filter is still on.

**Status:** This problem is resolved.

4. **New Feature:** The program will now automatically remember the Configuration that the user was last was in upon logging out of the system. This feature was added so each user no longer has to change the Configuration each time they log in if the default Configuration is not the one they want. No additional setting is required for this feature.

5. **New Feature:** For the grid, the user can set the fixed columns.

To fix a column:

- a. Move the cursor on the column header.
- b. Click the right mouse button to open the popup menu.
- c. Click the “Fixed Left” item to fix the column to the left side.
- d. Click the “Fixed Right” item to fix the column to the right side.

To cancel a fixed column:

- a. Move the cursor on the fixed column header.
- b. Click the right mouse button to open the popup menu.
- c. Click “Not Fixed” item to cancel the fixed column.

6. **New Feature:** For the Print/Preview of the grid, the Advanced Filter string is shown on the bottom left of the page.

7. **Modification:** Made minor cosmetic changes.

#### v1.5 build 6

1. **Problem:** If you setup and save a column filter on a column that contains dates, when you reopen the layout the grid is not filtered on that column correctly.  
**Status:** This problem is resolved.
2. **Problem:** Grid View: the column filter may be lost when opening a saved Advanced Filter or creating a new Advanced Filter.  
**Status:** This problem is resolved.
3. **Problem:** Form Reports: when a user clicks the Show Form Report button to open a Form Report, it does not show the default Form Report.  
**Status:** This problem is resolved.
4. **Problem:** On the Data Summary dialog, if the user selects Calculate Fields to create a Data Summary, an error may occur.  
**Status:** This problem is resolved.
5. **Problem:** Charting: if a Chart has multiple series, and one or more of the series has null values, the Chart will not show these series properly.  
**Status:** This problem is resolved.
6. **Modification:** Made minor cosmetic changes.

#### v1.5 build 5

1. **New Feature:** Added “Use Grid Filter” check box on the main form tool bar. If it is checked, the Form Report will be filtered by the Grid’s current filter (Advanced Filter and Columns filter).
2. **Problem:** When a Form Report has focus and the user clicks F5 or the current DataView to refresh the screen the Form Report Toolbar is disabled.  
**Status:** This problem is resolved.
3. **Problem:** When a Form Report has focus and the user clicks on a different DataView an error may occur.  
**Status:** This problem is resolved.
4. **Problem:** If a configuration has no DataViews showing on the Side Bar and the user clicks on the Display Grid menu item an error may occur.  
**Status:** This problem is resolved.
5. **New Feature:** On the main form, if the configuration has no DataViews on the Side Bar. A there are no available DataViews message will shows on the main form and the Display Grid, Refresh, Show Data View Description Menu Items

and the Load Data for Grid, Load Data for Chart buttons are disabled.

6. **Modification:** Made minor cosmetic changes.

#### v1.5 build 4

1. **Modification:** For some DataViews, if there are too many records returned, it may cause “Out of Memory Exception” problem. If this problem happens, the program will show a more descriptive message so the user can try to avoid this problem.
2. **Modification:** Made minor cosmetic changes.

#### v1.5 build 3

1. **Modification:** Made some changes to load saved Advanced Filter fast.
2. **Problem:** An error may occur if a DataView has no records and it has fields using a Progress meter as the editor.  
**Status:** This problem is resolved.
3. **Problem:** If the saved DataView layout has a column filter and the column data type is Date, the layout may not be loaded properly (there is no records shown in the view).  
**Status:** This problem is resolved.
4. **Problem:** In the Advanced Filter dialog, when a field has many values the Load Data button may not work correctly.  
**Status:** This problem is resolved.
5. **Problem:** When you open the Advanced Filter, click cancel to close the dialog, and then try to change the layout, the program will ask if you want to save the changed layout. But no change has occurred as the Advanced Filter dialog was cancelled.  
**Status:** This problem is resolved
6. **Modification:** Made minor cosmetic changes.

#### v1.5 build 2

1. **Problem:** When a DataView has a progress meter as the editor an error may occur when the user switched the DataView from flat grid to flat card when a field.  
**Status:** This problem is resolved.
2. **Problem:** When a DataView has layouts for flat and master/detail, if the

master/detail layout is not setup correct, sometimes the flat grid will not work properly.

**Status:** This problem is resolved.

3. **Modification:** Made minor cosmetic changes.

#### v1.5 build 1

1. **Problem:** Advanced Filter - If you open the advanced filter, don't add any lines, and then click the Ok button it closes the dialog and uses a blank filter. The Advanced Filter button text is bolded and you can save it.  
**Status:** This problem is resolved.
2. **Problem:** Advanced Filter - When you create a new advanced filter and click the Ok button it is applied. If you then clear the filter before saving it doesn't mention that your changes will be lost. If you then try to leave the view, a message is displayed saying the advanced filter has changed, but you have already cleared it and there is nothing to save.  
**Status:** This problem is resolved.
3. **Problem:** Card View - When you have a grid in Card View the only toolbar buttons that should be shown are print and export. The other buttons only apply to grid views.  
**Status:** This problem is resolved.
4. **Problem:** Data Summary - Create a data summary. Clear it, but don't save. Click data summary again (don't leave the view or refresh) and the summary that you cleared is loaded in the dialog.  
**Status:** This problem is resolved.
5. **Problem:** Data Summary - Create a data summary on a view that has preview fields in the drop down. Notice that the preview fields are cleared. Good. Clear the summary. The preview fields do not reload, the drop down is empty. You have to reload the view to get them back.  
**Status:** This problem is resolved.
6. **Problem:** Data Summary - Create a data summary. Clear it and say yes to the save message to avoid losing the changes. When the save dialog is shown, click the cancel button. It clears the summary as if a successful save occurred (potential to lose a summary). There is the same problem on Advanced filter.  
**Status:** This problem is resolved.
7. **Problem:** When a user tries to open a view which doesn't have FieldInfo records populated a message (9722) "Cannot find Field Info records, Please populate the field info and try again". When the user clicks OK button another error shows up.  
**Status:** This problem is resolved.

8. **Modification:** Form Report: removed direct print button to avoid printing all pages of the current Form Report by mistake.
9. **Problem:** Form Report. If the user tries to print the currently opened Form Report the print job is sent to the same printer as the Form Report designer selected. It supposed choose the local default printer.  
**Status:** This problem is resolved.
10. **Problem:** When the user chooses to filter by computer name the program may raise an error.  
**Status:** This problem is resolved.
11. **Modification:** Made minor cosmetic changes.

v1.5 build 0

6. **New Feature:** Added Form Report functionality so form-style reports can be created in DataViewer Designer Enterprise and displayed and printed in DataViewer Enterprise.
7. **New Feature:** Updated DevExpress controls to the latest version.
8. **Problem:** In the Chart screen, if the DataView has chart setting but cannot draw the chart. If the user clicks Chart Setup button to open Chart Setup screen and then click Cancel button to close the screen. The next time when user opens Chart Setup screen the all records are lost.  
**Status:** This problem is resolved.
9. **Problem:** In the Advanced Filter, it takes too long to popup the dropdown list for the Field Value column.  
**Status:** This problem is resolved. Added the "Load" button to the Data tab in the dropdown list.
10. **Problem:** In the Advanced Filter, an error "Column 'colOrder' is constrained to be unique" occurs when the user deletes existing rows then adds new ones to the grid.  
**Status:** This problem is resolved.
11. **Problem:** In the Advanced Filter, the replaceable text "[Login RG]" is not working for MMS database.  
**Status:** This problem is resolved
12. **Problem:** In the Advanced Filter, a user creates a new advanced Filter and saves it, when the user leaves the current grid layout the program fails to ask the user if save the changed layout.  
**Status:** This problem is resolved

13. **Problem:** In the grid screen, if the user makes some column summary (such as Sum/Count/Max) on the grid and then leaves current layout the program fails to ask the user if he or she wants to save the changed layout.

**Status:** This problem is resolved

14. **Modification:** Made minor cosmetic changes.